

I hereby give notice that an ordinary meeting of the Saxton Field Committee will be held on:

Date: Friday 4 May 2018
Time: 4.00 pm
Meeting Room: Saxton Netball Pavilion
Venue: Stoke
Nelson

Saxton Field Committee
LATE ITEMS ATTACHMENTS
ATTACHMENTS UNDER SEPARATE COVER

MEMBERSHIP

Independent Chair

Judene Edgar

Tasman District Council

Cr Trevor Tuffnell

Cr Kit Maling

Nelson City Council

Cr Tim Skinner

Cr Gaile Noonan

(Quorum 3 members)

Contact Telephone: 03 543 8578

Email: tara.fifield@tasman.govt.nz

Website: www.tasman.govt.nz

ITEM

PAGE

8.1 Saxton Field Long Term Plan 2018-2028 submissions

- 4. Nelson City Council - Saxton Field submissions 3
- 5. Nelson City Council summary of LTP submissions 113

Submission Summary

Nelson's Long Term Plan 2018-28 Consultation Document - Submission #18128

Ms Rachel Knowles
Secretary Nelson Baseball

knowles.rach@gmail.com

Nelson

Speaker? False

Department	Subject	Opinion	Summary
NCC - Infrastructure Services	01. Council priority - Infrastructure		Please see attached.

Printed: 26/03/2018 01:38

18128-1

Bev McShea

From: Administration
Subject: FW: Submission for LTP 2018-28
Attachments: Infrastructure submission - Nelson Baseball.pdf; Nelson Baseball Association Endorsement.pdf

From: Rachel Knowles <knowles.rach@gmail.com>
Date: 27 July 2017 at 9:42:42 PM NZST
To: Gabrielle Thorpe <Gabrielle.Thorpe@ncc.govt.nz>
Subject: Re: Sport Code Questionnaire BASEBALL

Hi Gabrielle

Please find attached our submission for infrastructure funding, accompanied by a letter from the CEO of Baseball NZ.

Does this need to be sent on to anyone else also?

Thanks for your time and for considering our request.

Regards
Rachel
Secretary, NELSON BASEBALL
021 343 690

18128-1



24 January 2017

To Whom it May Concern,

The Nelson Baseball Association is one of our newest affiliated baseball clubs in the nation, adding to the strong growth and interest of the fast-growing sport of baseball in New Zealand.

It's been very exciting to see such a young club achieve so much in such a relatively short space of time, and Baseball New Zealand is very pleased to support the growth of the local baseball community in the Nelson region, a club led by a dynamic board of directors that has jumped head first into promoting the international game of baseball, a sport that can offer so much to our young New Zealanders.

Nelson Baseball Association has some of the top administrators in the nation, in my opinion, and we are sincerely of the belief that with top athletes that this region seems to always produce, plus some great coaches like Marty Grant (with world class pedigrees) they will continue to achieve great things for kids and sport. Additionally, it speaks volumes that since their inception have already hosted with passion and ease two top players from the United States, in former Pittsburgh Pirates pitcher John Holdzkom and legendary former pitcher and broadcaster Jim Kaat.

This discipline and passion for the sport and the opportunities it affords so many of our young people is at the root of their success in Nelson - and now, I believe, it is time to support a sport that has gone from 600 to 7,000 players in only 6 years and offers opportunities that few sports can match as far as pathways and global experiences to our young people as young as 10 years old.

New Zealand is a nation of great bat and ball athletes, and Baseball New Zealand is continuing to ensure that New Zealanders can and will take these natural abilities to the world stage. Thank you for your time and attention, and if you have any questions please do not hesitate to contact me at your earliest convenience.

With regards,



Ryan Flynn
Chief Executive
E: ryan.flynn@baseballnewzealand.com
M: 021 665 339

18128-1

1. Name of organisation: Nelson Heat Baseball
2. Contact: Rachel Knowles. Secretary.
nelsonbaseballNZ@gmail.com
021 343 690
www.nelsonbaseball.co.nz (under construction)
3. What is your vision and goal/s for your sport over the next 5-10 years?
Please attach relevant documents such as strategic plan, constitution

Baseball is played by 60 million people worldwide and is the fastest growing sport in New Zealand. Baseball in Nelson has been running for only one season so while we may not have a history to reflect on, we hope that council will regard the future potential we have, when considering this application.

We currently have a number of administration projects close to completion: strategic plan, constitution, charitable trust status and website construction. We plan to have these completed before the commencement of our new season in October 2017 and can provide evidence of such to council at this time.

In the next year we plan to establish a tee-ball league and therefore at least double our current membership.

We have agreements with some schools in the region to provide a baseball programme, therefore providing further opportunities for introducing the game to youth of the region and further grow our membership. Those schools are Nelson College, Nelson Boys Prep, Henley School and Enner Glyn School. We would approach more schools but do not have the volunteer hours available at the moment.

Baseball NZ is very supportive and has plans for coaching, umpiring and scorekeeping lessons held in the South Island.

We also have interest from US baseball fraternities and the MLB about establishing academies in New Zealand. They are interested in Nelson because of its central location, the weather, and the available space to build a 90ft diamond. Space is either unavailable or very pricey in Auckland and Wellington for such diamonds, hindering development.

Professional facilities in Nelson could bring any number of opportunities, from tournaments, international games, baseball academies, coaching clinics run by major league players and alumni, and creating a player hub for the country.

The facilities we are seeking are not for a minority or obscure sport, we are asking for one diamond for one of the most played sports in the world. There is no doubt in anyone's minds that baseball is about to explode amongst Kiwis and we want to be prepared for that.

On our wishlist, in a perfect world!, would be a 90ft diamond (400ft to centre field), made up of: (price estimates noted)

- a back stop fence 10m high with side fences and roofed dugouts \$150,000
- an artificial turf infield and moveable mound \$165,000

18128-1

- two bullpens (caged warm up facilities for pitchers) \$100,000
- temporary back fencing \$35,000
- lighting (no cost estimate known)

The fencing arrangement means no permanent back fence, so that the outfield can be used by rugby league and other codes in the off-season. This would mean the parts of the setup that would be a permanent fixture would be a fraction of the 5ha Champion Green.

The moveable mound would allow flexibility in use of the infield, i.e. the mound at 50ft for U13s, at 60ft for U16s and at 70ft for adults.

The idea with the lighting would be that it can be shared between us and rugby league and even the inline skaters if that would work in. Rugby league and ourselves propose fixed lighting at the NE and SW ends of Champion Green with removable lights in the centre that can be repositioned so as not to end up fixed in the middle of a league field or the outfield.

We would also ask for space allocation for a very long term concept, and that is batting cages. These would be for training purposes but could also include a public use aspect, where people pay for so many balls out of the machine. This could be an indoor facility or a caged, open air facility.

4. What trends are happening for your sport nationally/locally?

Baseball was introduced to New Zealand in the 1990s but in the last six years, player numbers have grown from 600 to 7000 (see attached reference from Baseball NZ CEO Ryan Flynn). Expectations are for an explosion of players nationwide and Baseball New Zealand is desperate for new infrastructure opportunities.

Baseball is a game of wide appeal: It uses skills that every child has, hitting, throwing and catching. There is no minimum size, unlike many other sports – the average Major League Baseball player is 1.87m (6'1") and 86kg. Jose Altuve of the Houston Astros is 1.65m (5'5") and 77kg. It is suitable for all cultures and abilities and is relatively safe – every season, 40% of youth rugby players will sustain an injury. So will 9.3% of football (soccer) players, versus 5.8% of youth baseball players. It is a fast-paced exciting game and it is for these reasons that player numbers are rising steadily in New Zealand.

For those who are especially passionate about the sport, there are many pathways available to them, including scholarships and professional careers and Olympic medals. (Baseball is an Olympic sport for men, softball is an Olympic sport for women).

Earlier this year the Nelson Heat U13 team played live on SKY Sport - how many other sports in New Zealand can garner such crowds to warrant their U13 teams receiving live television coverage?

The team was playing for third-fourth place at the NZ Club Champs and ended up winning the game 7-0. The team was nominated for team of the year at the Baseball NZ sports awards ceremony and Marty Grant was nominated as coach of the year.

Our U16 team also had a successful season, finishing third at the Jim Kaat Invitational tournament in Christchurch in February.

18128-1

We see the successes of these teams as integral to attracting new players in the Nelson region, and already as we begin off-season training we are being contacted by eager new members.

5. What challenges are you experiencing? What solutions do you propose? E.g. coaching, access to suitable facilities

Our main challenge is being without a diamond. We are extremely grateful for usage at Champion Green, but would like a proper diamond so we can train and play and host visiting teams. At the moment the grounds are very stony and make fielding ground balls dangerous for our young players. We also have nowhere for our pitchers to train and warm up that is safe for everyone, hence the need for bullpen.

We propose the construction of a diamond as detailed above. We propose to initiate funding opportunities ourselves so would not be sitting on our hands expecting council to completely fund the infrastructure, but as a long term project, we would appreciate any financial support we can get.

We would ask that the outfield continue to be worked also, to reduce the stoniness. And that it is rolled after the league season is over to avoid broken ankles as outfielders chase fly balls.

We also ask for the right to have a small infield to be line marked at the other end of the Green. This would not have any permanent fixtures but would be allow us to use if for training, or tee ball games. We would use our current portable backstop behind it. In the off-season no evidence of it would remain.

The other challenge we have is gaining access to the softball diamonds on occasion. These diamonds are the perfect size for the U13 baseball grade and do have extended periods of time when they are not in use. Having these four diamonds available to us would allow us to host national U13 tournaments, and increase our stamp on the national baseball scene.

6. Please explain how you track membership and provide annual membership numbers

Last year we had 40 members, which we saw as a great start to our code in a new region. Taking into consideration new enquiries, our in-school programmes, and the establishment of a tee-ball league, we envisage increasing our membership substantially this season.

7. Please estimate the number of casual members who participated in an activity/ event or competition that you ran in 2015?

N/A

Submission Summary

Nelson's Long Term Plan 2018-28 Consultation Document - Submission #18193

Ms Christine van Hoppe
Club President Tasman Wheelers

race@tasmanwheelers.co.nz

Nelson

Speaker? False

Department	Subject	Opinion	Summary
NCC - Infrastructure Services	18. Parks and active recreation		See attached.

Printed: 29/03/2018 02:09

18193-1

Bev McShea

From: Submissions
Sent: Thursday, 29 March 2018 1:38 p.m.
To: Administration
Subject: FW: Statement of Support for the Champion Green Facilities Committee's initiative that has been Registered in the Long Term Planning Submission with the Nelson City Council and the Tasman District Council
Attachments: Council Submission Support .pdf
Categories: Bev

From: Customer Service
Sent: Thursday, March 29, 2018 12:38:22 AM (UTC+00:00) Monrovia, Reykjavik
To: Submissions
Subject: FW: Statement of Support for the Champion Green Facilities Committee's initiative that has been Registered in the Long Term Planning Submission with the Nelson City Council and the Tasman District Council

From: Tasman Wheelers [mailto:race@tasmanwheelers.co.nz]
Sent: Thursday, 29 March 2018 1:15 p.m.
To: Council Enquiries (Enquiry) <NCCEnquiry@ncc.govt.nz>; info@tasman.govt.nz
Subject: Statement of Support for the Champion Green Facilities Committee's initiative that has been Registered in the Long Term Planning Submission with the Nelson City Council and the Tasman District Council

Please find attached a copy of a statement of support for the Champion Green Facilities Submission – registered in 2017.

Kindest regards

Christine van Hoppe on behalf of the Tasman Wheelers Club Committee



18193-1

CHAMPION GREEN FACILITIES COMMITTEE SUBMISSION re - PAVILION & SPORTS CIRCUIT:

On behalf of the Tasman Wheelers INC Cycling Club Committee, we wish to support and endorse the submission placed before the Council in 2017 for the Long Term Plan from the **Champion Green Facilities Committee** to be considered as a high priority for the **2018 Long Term Plan**.

- This submission proposes the development and support by both **TDC and NCC alongside community volunteer fundraisers**, to build the essential facilities required for the Champion Green/Saxton Velodrome sports code users and public.
- **The Community Fundraisers** already have substantial interest in supporting this project if it is to go ahead in 2019.
- **Currently there are no public facilities** planned or designed to support the user groups and public utilising the Saxton Velodrome, Champion Green and proposed Sports Circuit. A tentatively planned site has been allocated for this.
- We believe that it is the **Tasman District Council's and Nelson City Council's responsibility and immediate priority to the public and their ratepayers** to ensure that the public users are provided in the 2018/19 facilities development programme with the core facilities as currently provided for all other Saxton Field and other regional sporting groups and users.
- We believe it is the **Saxton Field Committee's responsibility and immediate priority** to plan for the installation of such facilities now before major **Health and Safety risks become a reality**.

Current National Community Expectations for Sporting Facilities:

A. That user groups and the public have modern, clean and safe operational facilities.

- 1. That all sporting user spaces have provided with them the following Health and Safety building provisions on site:**
 - i) A building structure containing - toilets – male/female and/or unisex.
 - ii) A building structure containing hot and cold running water for washing up with showering facilities alongside this.
 - iii) A building structure that contains a medical room – this is critical for velodrome, field and circuit users where sporting accidents are prevalent.
- 2. That all sporting user spaces have provided with them building space for sports code users to use for their equipment storage:**
 - i) A building structure containing storage units for all current and future sports code users.
 - ii) A building structure that provides secure, safe and accessible storage.
- 3. That all sporting spaces have provision for safe spectator viewing from seated positions:**
 - i) A building structure that incorporates safe viewing seating requirements. Currently the public view the velodrome racing from an **unsafe and a dangerous position** by leaning over the velodrome fence often into the path of high speed cyclists.

18193-1

- 4. That all sporting user spaces need to be established that provide user groups with adequate space for the administration of their sport.**
- i) A building structure to provide administration space for meetings, coaching and national administration hubs.
 - ii) A building structure to support the interaction activities of sports code users with kitchen facilities.

On behalf of the Tasman Wheeler's Committee: Christine van Hoppe – Club President
Email: race@tasmanwheelers.co.nz

Submission Summary

Nelson's Long Term Plan 2018-28 Consultation Document - Submission #18656

Mr Murray Cameron
Chair Champion Green Facilities Group

murray@educationfutures.co.nz

Nelson

Speaker? True

Department	Subject	Opinion	Summary
NCC - Infrastructure Services	18. Parks and active recreation		See attached.

Printed: 11/04/2018 09:50

18656-1

Bev McShea

From: Administration
Subject: FW: Submission from Murray Cameron for draft LTP
Attachments: NCC- Sport code projects LTP 2018-28 Champion Green Facilities Cmmttee .pdf

Hi Gabrielle

Many thanks for your contact today and your considered information re- **The Champion Green Facilities Committee's** 2018-28 LTP.

Please read the following information that explains the need for the development of Champion Green Facilities as a priority for all users:

- To ensure you are aware who we are, the **Champion Green Facilities Committee** is not a club but a group established for a specific project at Champion Green which complements the new Saxton Velodrome. We established our initiative after we met with and were advised by **Andrew Petheram of NCC** to establish this format(a combined sporting codes group) Andrew indicated that to establish facilities just for a cycling club would not be credible. We are doing this for the **public users of Nelson and Tasman as well as all of the sporting code users** in the Champion Green vicinity.
- We note that Athletics, Hockey, Cricket, Soccer and Netball ,all single cell sports codes, have their own facilities at Saxton Field and are not shared with multi-users. Their "**sporting and building facilities**" are almost all security fenced with plenty of "keep out " signage. They are not open to the public like the Saxton Velodrome complex. No velodrome in NZ is physically open to the public and high speed cyclists for usage at any time they wish , as we all know that track cycling is a very dangerous and high speed sport!!
- We note the **Modellers Society received an incredible amount of \$1.2 m** to clean up their pond. We wrote to them to join us at the Saxton Field and use the fantastic fresh water pond developed at considerable ratepayers expense. We expected the NCC and TDC would direct them to use the Saxton Pond. No reply!
- The velodrome circuit was recently completed and is now in great use by cyclists and general public on a daily basis. Yesterday (Sunday) afternoon the public users numbered about 20 Mums and Dads with their 2-10year olds, with dogs ,skate boards, scooters, trikes and bikes all using the Safety Circuit and coming and going as they pleased. At the same time one of the local cycling clubs was conducting high speed time trials and races. They had the velodrome booked in with the TDC. Some of the participants were racing at 50kph+...a highly dangerous situation ...and no medical/first aid/toilet facilities available for accidents. No signage up to inform the public that "high speed " racing is taking place and public to keep off when this is booked for usage.
- Already we have had one major crash with the ambulance being called. This meant that while the cyclist involved had to lay on the cold velodrome surface(no medical rooms) at 8.30pm he was in a serious state.
- All the user/sports groups using the nearby grounds as well as the velodrome are all aware that the sporting and public users DO NOT have any HEALTH AND SAFETY FACILITIES at this complex. We do need both the NCC and TDC to explain this and act accordingly to provide acceptable public expectations of user amenities.
- At all of our cycling sessions (3 per week) participants are having to toilet behind cars and piles of dirt. There is a toilet in the soccer shed some distance from the velodrome and is locked to the public. You have all been warned that this would be the case but still nothing has been done... this is totally unacceptable. Privacy to change clothing before and after events is non-existent.
- Recently a group of 12 , 3-4 year olds from a local Play Centre were enjoying the use of the Safety Circuit and I personally witnessed them toileting just beyond the velodrome fence. This is just not good enough.
- Next term we have several Intermediate and Secondary schools interested in taking up our introductory track cycling sessions. Our "Junior Trackies" sessions will start in October. Schools all have toilet facilities and

18656-1

medical/first aid rooms...Saxton Velodrome does not. Accidents are inevitable with school groups!! Schools will not use the velodrome once they are aware that there are no Health and Safety Facilities.

- Soon, not just active participants, but members of the public/ratepayers will be contacting NCC and TDC personnel to explain where are the normal and expected facilities that should be in position now.
- I note that that the Saxton Field Committee (that involves Councillors and Council Personnel)have pushed the concept of developing facilities at the Saxton Velodrome out to 2028. What on earth are they thinking about? ALL of the other sports sites at Saxton Field have sports facilities which include toilets, showers, medical rooms, meeting rooms and social interaction facilities. We have building plans and funding concepts readily available.
- We have just seen the success of the Commonwealth Games Velodrome cycling and now this is ready to take off for our local cyclists and public.

Cycling NZ have indicated they wish to set up a Top of the South Hub at Saxton Velodrome. They do not yet know that the NCC and TDC do not have any facilities for such a hub. What a tremendous boost for Nelson This will be the 3rd best velodrome in NZ and a central location. If it had facilities and would attract cyclists, skaters and athletes from all around NZ and beyond for large participation events and coaching courses.

- I wish to book a time to discuss our **Champion Green Facilities Committee submission** to the full council. I will be doing this through the normal channels before the submission support close off date of 23 April.

Finally I wish to refer you to an excerpt from the Dominion Post's very good Editorial in Saturday April 7 Dom. Post Headed " **Build New Venue and Culture**"

The Editor starts off:

"If you build it they will come. That's a common refrain in the entertainment industry, whether that be sports, music or culture. If you want top class acts in these fields you need top class arenas to host them and great infrastructure as a support act".

This is worth a read.

I look forward to further liaison.

Thanking you

Yours sincerely

Murray

Murray Cameron
Chair –Champion Green Facilities Group
Mob. 0276450033
Email: murray@educationfutures.co.nz

LONG TERM PLAN SUBMISSION – Champion Green Facilities Group

18744-1

CHAMPION GREEN FACILITIES GROUP

LONG TERM PLAN SUBMISSION – NELSON CITY COUNCIL 2017

DEVELOPMENT PROPOSALS	
Requests	<p>Priority One: Facilities Pavilion for usage by the vested groups and with public access (Priority request) - Multi-code users, school users, public usage.</p> <p>Priority Two: Champion Green Sports Circuit - multi-usage 5m wide sealed circuit surrounding the Champion Green (Sports Field used for League & Baseball) – Multi-code users, school users, public usage.</p>
Participation	<p>The numbers for each user group are as follows: Tasman Wheelers Cycling Club (2017) 239 members Speed Skating (2017) 100 members Baseball (2016) 40 members Rugby League (2015) – Tasman Rugby League 75 adult player/members Athletics (2017) 80 members Parafed (2017) member numbers not currently available</p>
Funding	<p>Priority one: Facilities Pavilion build - Cost estimates have been supplied – as outlined below - Preliminary building design plans – as attached</p> <p>Priority Two: Champion Green Sports Circuit - multi-usage 5m wide sealed circuit. - Cost estimates have been supplied – as outlined below - Preliminary building design plans – as attached</p>
Sharing of Facilities/improvements	<p>The Facilities Pavilion facility would be a co-share with Rugby League, Skating, Baseball, Athletics and Parafed and Cycling. Note: Athletics (road circuit running/road walking) have expressed interest in becoming an integral part of this group as well.</p> <p>Champion Green Sports Circuit - Multi-code users, school users, public usage. Open to public for recreational walking/running/cycling and fitness work. Fitness target/distance markings. The circuit will need clearly established public and sports training and racing etiquette signage.</p>
Wider benefits and potential	<p>Facilities Pavilion - facility will be widely used for a base administration and coaching centre for the user codes, open for regular sport functions and used for storage spaces for all affiliated users of Champion Green. Health & Safety facilities - toilets /showers, first aid/medications and sport physio facilities available. General public usage as negotiated.</p> <p>Champion Green Sports Circuit - Multi-code users, school users, public usage. Skating, cycling, running, walking, wheelchairs – open to public.</p>

Transferred to 18744-1

Item 8.1

Attachment 4

LONG TERM PLAN SUBMISSION – Champion Green Facilities Group

18744-1

PARTICIPATION

- The number of people directly benefiting from the request (based on current participation numbers / national - local participation trends)
- Accessibility - Does the project reduce barriers to participation or increase likelihood of a wider range of users in future?

TRENDS:**Future Facilities Pavilion and Champion Green Sports Circuit Users**

- **Cycling in all forms** – road, velodrome, cyclo-cross, mountain bike, BMX and casual recreational participants have increased markedly in the last 5-10 years.
- **Inline Speed Skating** – attracting new skaters regularly with Nelson and Marlborough clubs membership increasing.
- **Increased Cycle Ways infrastructure** has attracted an increasing range and burgeoning numbers to get involved in cycle activity for both fitness and recreation.
- The **general public** are attracted to off-road circuits as it is **safer** to ride on these compared to the roads.
- **Tourists** are using Cycle Ways and possible future users of the Saxton Field facilities especially the Velodrome.
- **Bike Hire** companies are growing in number in the region
- **Participation numbers** in competition in all areas have increased.
- **High interest in velodrome and road cycling** events nationally and internationally is evident.
- **Locally raised international high profile cycling competitors** - George Bennett & Jack Bauer bringing greater interest and prestige to cycling.
- **Multi-sport users** – trends showing an increase in participation in running, skating, walking, wheelchairs, fitness activities and general outdoor appreciation for recreational activity for all age ranges.

LONG TERM PLAN SUBMISSION – Champion Green Facilities Group

18744-1

FUNDING

- Whole of life costs of project (including ongoing maintenance and renewals, staff resources etc.) and availability of future funding for these
- Funding requested from Council
- Funding from other sources
- Code contribution

CHAMPION GREEN FACILITIES PAVILION ESTIMATES

Building Area: 500sqm. (Two levels)

Current building costs:

Building structure approx. \$3000 per sq.m = \$1,500,000
 Outdoor seating = \$50,000
TOTAL COST (on 2017- 2018 quotations) = **\$1,550,000**

Current Annual maintenance cost (estimate) = \$7000

(Note: This does not include annual compliance costs for: lift, fire & emergency, pan tax & insurances)

Funding Contributions:

Champion Green Facilities Trust (user group representatives)
 (Funding Sources –Rata Foundation, NZCT, Gold, Silver & Bronze Level sponsors) - 37% = \$573,500
Nelson City Council - 31.5% = \$488,250
 (Fund sources –Community Facilities Special Rate Fund)
Tasman District Council - 31.5% = \$488,250
 (Fund sources –Community Facilities Special Rate Fund)

Annual maintenance cost = \$7000

(Fund sources –Community Facilities Special Rate Fund, Trust Funding sources, Key sponsors & user groups amenities fees)

CHAMPION GREEN SPORTS CIRCUIT

Current construction costs:

Construction of 1km circuit @ approx. \$365 per lineal metre = \$365,000
TOTAL COST - Plus 10% contingency = **\$400,000**

Transferred to 18744-1

LONG TERM PLAN SUBMISSION – Champion Green Facilities Group

18744-1

Item 8.1

SHARING OF FACILITY & IMPROVEMENTS

- How the facility would be made available to and be used by other sporting codes and/or recreational activities and/or the community
- How often the facility would be used on a daily/weekly basis
- Adaptability to future/changing community requirements.

- The **Facilities Pavilion** would be a co-share facility with Rugby League, Netball, Baseball, Athletics, ParaFed and Cycling. Used daily/weekly/specified usage bookings.
Note: Athletics (road circuit running/race walking) have expressed interest in becoming an integral part of this group as well. Triathlon, BMX and Cyclo-cross groups will be potential future users.
- The **Facilities Pavilion** would be available for public use – meetings, schools and small functions.
- The **Champion Green Sports Circuit** facility would be available to:
Specified user groups for training & racing, schools and general public recreational users.

Transferred to 18744-1

Attachment 4

LONG TERM PLAN SUBMISSION – Champion Green Facilities Group

18744-1

WIDER BENEFITS AND POTENTIAL:

- How the request would benefit the region economically
- The facility's fit with regional planning needs e.g. what is required within the region, Sport NZ advice on location of major facilities
- Contribution to Nelson City vibrancy/uniqueness.

ECONOMIC ADVANTAGES TO NELSON-TASMAN REGION:

Introduction:

The Facilities Pavilion sited as planned adjacent to the Saxton Velodrome would be seen as a unique building facility visible from the main Richmond-Stoke-Nelson highway.

This will be a "show-piece" building completing the highly regarded Saxton Field sporting complex.

Landscaped with stature trees and raised banks this will be aesthetically and environmentally attractive.

The Facilities Pavilion signage visibility would be enhancing and appealing to the public.

Champion Green Sports Circuit – A National and international sports circuit capable of attracting a range of sports especially Inline Speed Skating, Road Running, Para feet wheel chair racing and Criterium style cycling as popular throughout Australia, Europe and UK.

The Nelson-Tasman region is well recognised throughout NZ and now internationally for its Saxton Field developments and facilities that can host national and international events.

Transferred to 18744-1

LONG TERM PLAN SUBMISSION – Champion Green Facilities Group

18744-1

CURRENT & PLANNED MAJOR EVENTS

- **Cycling NZ Hub** - National organisation focus being attracted to the Nelson-Tasman region – eg. Mooted already & planned for top half of South Island based at Pavilion
- **NZ Secondary Schools Cycling Championships** for future planning-(possible 800-1000 participants)
- **NZ Road Cycling Age-Group Championships** planned for 2019 – (possible 650-750 participants)
- **South Island Masters Games** –staged in Nelson-Tasman October 2017. Approx 1500 – 2000 competitors and supported in the region for a week
- **Abel Tasman Cycle Challenge** - Open to Public - Recreational event - potential for 1500-2000 cyclists - (future use of Pavilion & possible future start/finish zone on Criterium circuit – safe off-road start/finish zone)
- **National Cycling Training Squads** based at Pavilion
- **National Inline Speed Skating Championships** - use circuit/pavilion – 100 plus
- **Oceania Inline Skating Championships** – 100 plus
- **National Road Running Championships** – future planning - road running on Saxton Field circuits with Champion Green Sports Circuit key usage (using circuit/pavilion))
- **National Baseball Teams Tournaments** –future planning
- **Provincial Rugby League Tournaments** – regular fixtures
- **Bike Hire companies**- usage of Champion Green Sports Circuit and Saxton Velodrome and cycle safety circuit in velodrome.

PROMOTIONAL INFORMATION**CYCLING****Comment from major NZ cycle event organisers run in Nelson – Tasman area****Calder Stewart Event - 9.9.2017**

- *With the help of the amazing team from the Tasman Wheelers who supplied official marshals, finish line judging, and drivers - two races set off. We also had to beg, borrow and steal gear as our equipment was all stuck in Chch. We teamed up with our mechanic John from Enthuse Media & Events and filled in as Comm 2 in the Masters and Women's event.*
- *All races were hard fought on a modified, very spectacular and scenic Upper Moutere course. Thanks must also go out for the riders who made the start line with a positive attitude and used the event to prop up a good weekend training block.*
- *Huge thanks to the Nelson Bays Motor Group who provided some very sharp vehicles for officials to use.*
- *This weekend was further proof that the Tasman Wheelers Cycling Club must be one of the premier cycling clubs in New Zealand.*
- *A positive group of people who work together to provide quality racing for all ages, create a fantastic club atmosphere, and provide an amazing environment for young riders coming through the ranks. They do all this in their own time for the greater good of cycling and our future.*
- *A number of clubs around New Zealand could take a few lessons from the Tasman Wheelers. Most definitely in comparison to what they have achieved and continue to achieve.*

Richard Scott Calder Stewart Event Co-Promoter

PROMOTIONAL INFORMATION**INLINE SPEED SKATING - CYCLING – TRIATHLON****Comment from major one of NZ's most successful Double Olympian****Chris. Nicholson from Nelson**

- ☒ **Chris. has been involved in cycling, skating and triathlon at an international and Olympic level over the last 25 years around the world.**
- ☒ *Regarding the proposed 1km circuit for Saxton Field I would like to express my enthusiasm for this development.*
- ☒ *I believe this track would be of great benefit to all of the above sports in Nelson as well as general public.*
- ☒ *I observed a similar circuit in London which was very well utilized and it provides a much needed facility where the traffic was arranged and in addition a natural meeting point.*
- ☒ *Speed skating in Nelson is developing very well but as we only have a 100m indoor track an outdoor longer track would open up a lot of opportunity for training safely and racing over longer distances.*
- ☒ *Cycling currently gets an excellent turnout on training nights at Trafalgar Park even though it is far from an ideal facility.*
- ☒ *When I was involved in triathlon it would have been great to have a place where it was possible to run and cycle at the same place in a safe way.*
- ☒ *The circuit I rode in London was used for training whenever someone wanted to have a good ride without traffic and also have a good chance that there would be someone to ride with. It was also used for racing.*
- ☒ *For speed skating I have done quite a lot of training on the Nelson cycle paths but they are far from ideal.*
- ☒ *Often the paths are too rough or narrow to skate on as well as having dogs and pedestrians and a lot of roads to cross over.*
- ☒ *It is not really OK for the younger skaters to use the cycle paths safely so as a result we miss out on having much outdoor training.*
- ☒ *We have used the car park at Saxton Field but this is too small and subject to traffic.*
- ☒ *Earlier this year I suffered a broken jaw due to the track being too small.*
- ☒ *The idea of a 1km circuit would be well complimented by the 333m cycle track but they are not the same thing. The velodrome is really for specific track cycling and not road training or skating.*
- ☒ *I am really hoping this project goes ahead.*

Chris Nicholson**Double (Skating & Cycling) Olympic Games Representative****International Triathlete**

LONG TERM PLAN SUBMISSION – Champion Green Facilities Group

18744-1

For any further information required please contact:

Murray Cameron
Chairman
Champion Green Facilities Committee
Ph. 0276450033
Email: murray@educationfutures.co.nz

Transferred to 18744-1

LONG TERM PLAN SUBMISSION – Champion Green Facilities Group

18744-1

CHAMPION GREEN SPORTS CIRCUIT



Submission Summary

Nelson's Long Term Plan 2018-28 Consultation Document - Submission #18693

Mr Trevor Garnett
Nelson Cricket Umpire Garnett+

trevormalcolmgarnett@gmail.com

6 D'Urville Rise
Richmond 7020

035449278
035449278

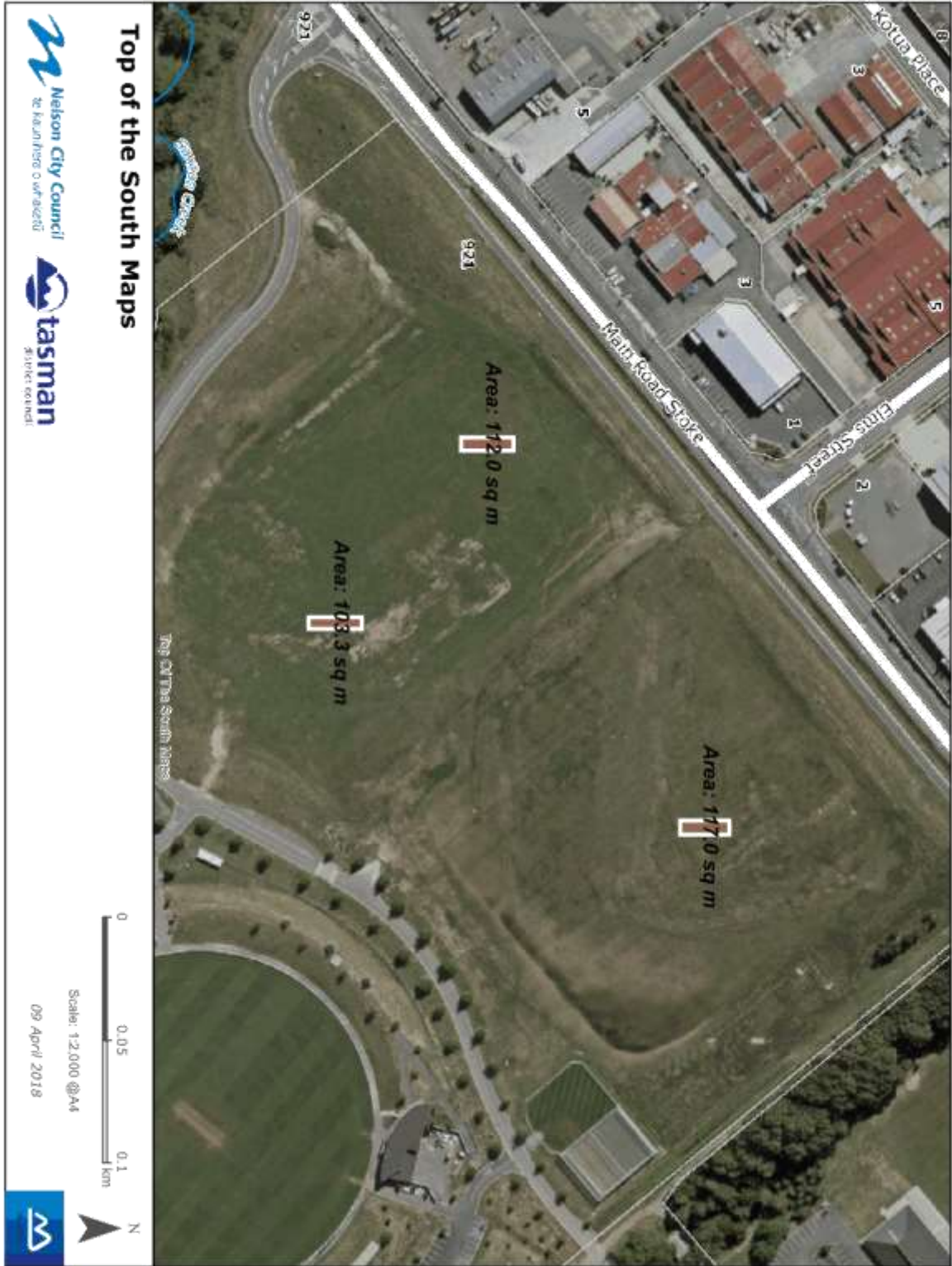
Speaker? True

Department	Subject	Opinion	Summary
NCC - Infrastructure Services	18. Parks and active recreation		See attached

Printed: 16/04/2018 09:15

18693-1

www.topofthesouthmaps.co.nz



The map is an approximate representation only and must not be used to determine the location or size of items shown, or to identify legal boundaries. To the extent permitted by law, the Tasman District Council and Nelson City Council, their employees, agents and contractors will not be liable for any costs, damages or loss suffered as a result of the data or plan, and no warranty or representation of any kind is given as to the accuracy or completeness of the information represented. Top of the South Maps information is licensed under a Creative Commons Attribution 3.0 New Zealand License, and the use of any data or plan or any information downloaded must be in accordance with the terms of that licence. Cadastral and NZTopo50 related data is sourced from Land Information New Zealand.

Submission Summary

Nelson's Long Term Plan 2018-28 Consultation Document - Submission #18744

Mr Murray Cameron
Chair Champion Green Facilities Group

murray@educationfutures.co.nz

Nelson

Speaker? True

Department	Subject	Opinion	Summary
NCC - Infrastructure Services	18. Parks and active recreation		See attached.

Printed: 16/04/2018 02:42

LONG TERM PLAN SUBMISSION – Champion Green Facilities Group

18656-1

CHAMPION GREEN FACILITIES GROUP**LONG TERM PLAN SUBMISSION – NELSON CITY COUNCIL 2017**

DEVELOPMENT PROPOSALS	
Requests	<p>Priority One: Facilities Pavilion for usage by the vested groups and with public access (Priority request) - Multi-code users, school users, public usage.</p> <p>Priority Two: Champion Green Sports Circuit - multi-usage 5m wide sealed circuit surrounding the Champion Green (Sports Field used for League & Baseball) – Multi-code users, school users, public usage.</p>
Participation	<p>The numbers for each user group are as follows: Tasman Wheelers Cycling Club (2017) 239 members Speed Skating (2017) 100 members Baseball (2016) 40 members Rugby League (2015) – Tasman Rugby League -75 adult player/members Athletics (2017) 80 members Parafed (2017) member numbers not currently available</p>
Funding	<p>Priority one: Facilities Pavilion build - Cost estimates have been supplied – as outlined below - Preliminary building design plans – as attached</p> <p>Priority Two: Champion Green Sports Circuit - multi-usage 5m wide sealed circuit. - Cost estimates have been supplied – as outlined below - Preliminary building design plans – as attached</p>
Sharing of Facilities/improvements	<p>The Facilities Pavilion facility would be a co-share with Rugby League, Skating, Baseball, Athletics and Parafed and Cycling. Note: Athletics (road circuit running/race walking) have expressed interest in becoming an integral part of this group as well.</p> <p>Champion Green Sports Circuit - Multi-code users, school users, public usage. – open to public for recreational walking/running/cycling and fitness work. Fitness target/distance markings. The circuit will need clearly established public and sports training and racing etiquette signage.</p>
Wider benefits and potential	<p>Facilities Pavilion - facility will be widely used for a base administration and coaching centre for the user codes, open for regular sport functions and used for storage spaces for all affiliated users of Champion Green. Health & Safety facilities - toilets /showers, first aid/medications and sport physio facilities available. General public usage as negotiated.</p> <p>Champion Green Sports Circuit - Multi-code users, school users, public usage. Skating, cycling, running, walking, wheelchairs – open to public.</p>

LONG TERM PLAN SUBMISSION – Champion Green Facilities Group

18656-1

PARTICIPATION

- The number of people directly benefiting from the request (based on current participation numbers / national - local participation trends)
- Accessibility - Does the project reduce barriers to participation or increase likelihood of a wider range of users in future?

TRENDS:**Future Facilities Pavilion and Champion Green Sports Circuit Users**

- **Cycling in all forms** – road, velodrome, cyclo-cross, mountain bike, BMX and casual recreational participants have increased markedly in the last 5-10 years.
- **Inline Speed Skating** – attracting new skaters regularly with Nelson and Marlborough clubs membership increasing.
- **Increased Cycle Ways infrastructure** has attracted an increasing range and burgeoning numbers to get involved in cycle activity for fun, fitness and recreation.
- The **general public** are attracted to off-road circuits as it is **safer** to ride on these compared to the roads.
- **Tourists** are using Cycle Ways and possible future users of the Saxton Field facilities especially the Velodrome.
- **Bike Hire** companies are growing in number in the region
- **Participation numbers** in competition in all areas have increased.
- **High interest in velodrome and road cycling** events nationally and internationally is evident.
- **Locally raised international high profile cycling competitors** - George Bennett & Jack Bauer bringing greater interest and prestige to cycling.
- **Multi-sport users** – trends showing an increase in participation in running, skating, walking, wheelchairs , fitness activities and general outdoor appreciation for recreational activity for all age ranges.

LONG TERM PLAN SUBMISSION – Champion Green Facilities Group

18656-1

FUNDING

- Whole of life costs of project (including ongoing maintenance and renewals, staff resources etc.) and availability of future funding for these
- Funding requested from Council
- Funding from other sources
- Code contribution

CHAMPION GREEN FACILITIES PAVILION ESTIMATES

Building Area: 500sqm. (Two levels)

Current building costs:

Building structure approx. \$3000 per sq.m	= \$1,500,000
Outdoor seating	= \$50,000
TOTAL COST (on 2017- 2018 quotations)	= \$1,550,000

Current Annual maintenance cost (estimate) = \$7000

(Note: This does not include annual compliance costs for: lift, fire & emergency, pan tax & insurances)

Funding Contributions:**Champion Green Facilities Trust** (user groups representatives)

(Funding Sources –Rata Foundation, NZCT, Gold, Silver & Bronze Level sponsors) - 37% = \$573,500

Nelson City Council - 31.5% = \$488,250

(Fund sources –Community Facilities Special Rate Fund)

Tasman District Council - 31.5% = \$488,250

(Fund sources –Community Facilities Special Rate Fund)

Annual maintenance cost = \$7000

(Fund sources –Community Facilities Special Rate Fund, Trust Funding sources, Key sponsors & user groups amenities fees)

CHAMPION GREEN SPORTS CIRCUIT**Current construction costs:**

Construction of 1km circuit @ approx. \$365 per lineal metre	= \$365,000
TOTAL COST - Plus 10% contingency	= \$400,000

LONG TERM PLAN SUBMISSION – Champion Green Facilities Group

18656-1

SHARING OF FACILITY & IMPROVEMENTS

- How the facility would be made available to and be used by other sporting codes and/or recreational activities and/or the community
- How often the facility would be used on a daily/weekly basis
- Adaptability to future/changing community requirements.

- The **Facilities Pavilion** would be a co-share facility with Rugby League, Skating, Baseball, Athletics, Parafed and Cycling. Used daily/weekly/specified usage bookings.
Note: Athletics (road circuit running/race walking) have expressed interest in becoming an integral part of this group as well. Triathlon, BMX and Cyclocross groups will be potential future users.
- The **Facilities Pavilion** would be available for public usage –meetings, schools and small functions.
- The **Champion Green Sports Circuit** facility would be available to:
Specified user groups for training & racing, schools and general public recreational users.

LONG TERM PLAN SUBMISSION – Champion Green Facilities Group

18656-1

WIDER BENEFITS AND POTENTIAL:

- How the request would benefit the region economically
- The facility's fit with regional planning needs e.g. what is required within the region, Sport NZ advice on location of major facilities
- Contribution to Nelson City vibrancy/uniqueness.

ECONOMIC ADVANTAGES TO NELSON-TASMAN REGION:

Introduction:

The Facilities Pavilion sited as planned adjacent to the Saxton Velodrome would be seen as a unique building facility visible from the main Richmond-Stoke-Nelson highway.

This will be a "show-piece" building completing the highly regarded Saxton Field sporting complex.

Landscaped with stature trees and raised banks this will be aesthetically and environmentally attractive.

The Facilities Pavilion signage visibility would be enhancing and appealing to the public.

Champion Green Sports Circuit – A National and international sports circuit capable of attracting a range of sports especially Inline Speed Skating, Road Running, Para fed wheelchair racing and Criterium style cycling as popular throughout Australia, Europe and UK.

The Nelson-Tasman region is well recognised throughout NZ and now internationally for its Saxton Field developments and facilities that can host national and international events.

LONG TERM PLAN SUBMISSION – Champion Green Facilities Group

18656-1

CURRENT & PLANNED MAJOR EVENTS

- **Cycling NZ Hub** - National organisation focus being attracted to the Nelson-Tasman region – eg. Mooted already & planned for top half of South Island based at Pavilion
- **NZ Secondary Schools Cycling Championships** for future planning-(possible 800-1000 participants)
- **NZ Road Cycling Age-Group Championships** planned for 2019 – (possible 650-750 participants)
- **South Island Masters Games** –staged in Nelson-Tasman October 2017(Approx.1500 – 2000 competitors and supported in the region for a week
- **Abel Tasman Cycle Challenge** - Open to Public - Recreational event - potential for 1500-2000 cyclists - (future use of Pavilion & possible future start/finish zone on Criterium circuit – safe off-road start/finish zone)
- **National Cycling Training Squads** based at Pavilion
- **National Inline Speed Skating Championships** - use circuit/pavilion – 100 plus
- **Oceania Inline Skating Championships** – 100 plus
- **National Road Running Championships** – future planning - road running on Saxton Field circuits with **Champion Green Sports Circuit** key usage (using circuit/pavilion))
- **National Baseball Teams Tournaments** –future planning
- **Provincial Rugby League Tournaments**- regular fixtures
- **Bike Hire** companies- usage of **Champion Green Sports Circuit and Saxton Velodrome** and cycle safety circuit in velodrome.

PROMOTIONAL INFORMATION**CYCLING****Comment from major NZ cycle event organisers run in Nelson – Tasman area****Calder Stewart Event - 9.9.2017**

- *With the help of the amazing team from the Tasman Wheelers who supplied officials, marshals, finish line judging, and drivers - two races set off. We also had to beg, borrow and steal gear as our equipment was all stuck in Chch. We teamed up with our media man John from **Enthuse Media & Events** and filled in as Comm 2 in the Masters and Women's event.*
- *All races were hard fought on a modified, very spectacular and testing Upper Moutere course. Thanks must also go out for the riders who made the start line with a positive attitude and used the event to prop up a good weekend training block.*
- *Huge thanks to the Nelson Bays Motor Group who provided some very sharp vehicles for officials to use.*
- *This weekend was further proof that the Tasman Wheelers Cycling Club must be one of the premier cycling clubs in New Zealand.*
- *A positive group of people who work together to provide quality racing for all ages, create a fantastic club atmosphere, and provide an amazing environment for young riders coming through the ranks. They do all this in their own time for the greater good of cycling and our future.*
- *A number of clubs around New Zealand could take a few lessons from the Tasman Wheelers. Most pale in comparison to what they have achieved and continue to achieve.*

Richard Scott - Event Co-Promoter

PROMOTIONAL INFORMATION**INLINE SPEED SKATING - CYCLING – TRIATHLON****Comment from major one of NZ's most successful Double Olympian****Chris. Nicholson from Nelson**

- ☒ **Chris. has been involved in cycling, skating and triathlon at an international and Olympic level over the last 25 years around the world.**
 - ☒ *Regarding the proposed 1km circuit for Saxton Field I would like to express my enthusiasm for this development.*
 - ☒ *I believe this track would be of great benefit to all of the above sports in Nelson as well as general public.*
 - ☒ *I observed a similar circuit in London which was very well utilized as it provides a much needed facility where the traffic was an issue and in addition a natural meeting point.*
 - ☒ *Speed skating in Nelson is developing very well but as we only have a 100m indoor track an outdoor longer track would open up a lot of opportunity for training safely and racing over longer distances.*
 - ☒ *Cycling currently gets an excellent turn out to training nights at Trafalgar Park even though it is far from an ideal facility.*
 - ☒ *When I was involved in triathlon it would have been great to have a place where it was possible to run and cycle at the same place in a safe way.*
 - ☒ *The circuit I rode in London was used for training whenever someone wanted to have a good ride without traffic and also have a good chance that there would be someone to ride with. It was also used for racing.*
 - ☒ *For speed skating I have done quite a lot of training on the Nelson cycle paths but they are far from ideal.*
 - ☒ *Often the paths are too rough or narrow to skate on as well as having dogs and pedestrians and a lot of roads to cross over.*
 - ☒ *It is not really OK for the younger skaters to use the cycle paths safely so as a result we miss out on having much outdoor training.*
 - ☒ *We have used the car park at Saxton Field but this is too small and subject to traffic.*
 - ☒ *Earlier this year I suffered a broken jaw due to the track being too small.*
 - ***The idea of a 1km circuit would be well complimented by the 333m cycle track but they are not the same thing. The velodrome is really for specific track cycling and not road training or skating.***
- I am really hoping this project goes ahead.*

Chris Nicholson**Double (Skating & Cycling) Olympic Games Representative****International Triathlete**

LONG TERM PLAN SUBMISSION – Champion Green Facilities Group

18656-1

For any further information required please contact:

Murray Cameron

Chairman

Champion Green Facilities Committee

Ph. 0276450033

Email: murray@educationfutures.co.nz

LONG TERM PLAN SUBMISSION – Champion Green Facilities Group

18656-1

CHAMPION GREEN SPORTS CIRCUIT



Submission Summary

Nelson's Long Term Plan 2018-28 Consultation Document - Submission #18878

Mrs Heather Bryant
Chairperson Nelson Hockey Association (1993) Inc

tandhbryant@gmail.com

45 Leicester Street
Stoke 7011

035470377
035470377

Speaker? True

Department	Subject	Opinion	Summary
NCC - Infrastructure Services	18. Parks and active recreation		See attached submission.

Printed: 23/04/2018 11:55

18878-1

The Nelson Hockey Association Inc ("Hockey Nelson") wishes to support the Nelson City Council Long Term Plan 2018-28 ("LTP") in relation to the Capital Works proposed for Saxton Field. Specifically we refer to the Supporting Document "Council Activity Summaries" and the Parks and Active Recreation section where funding has been allocated to replacing the hockey turf (pages 71 and 77 of the document). We support the spending of \$15,000 for 2017/18 and \$605,000 in 2018/19. We understand the figures shown also include an amount for the installation costs for electronic scoreboards. We consider both these items are essential for the continued development of hockey within the region.

Not only that but we also seek Council's further funding of an additional \$120,000 to bring forward the planned upgrade of the turf lighting system to new LED lights and control systems for reasons outlined below.

Replacement Turf

Currently all hockey is focussed at the Saxton Field dual turf complex and as such the turfs are subject to a high level of use not only for games and training for club, school and representative teams during the competitive winter season but also throughout the year, catering for various other activities ranging from junior holiday programmes, social summer competitions plus use by other sports for training and special events (football and rugby). We have also been privileged to hold national age group tournaments and the occasional NZ Black Sticks games.

The turf proposed for replacement was installed in 2006 and was due for replacement in 2017, having reached the end of its recommended useful life at that stage. However this date was pushed out for 12 months with the agreement of Hockey Nelson and Council staff to help ease funding pressures.

The turf is a huge asset to the hockey community and its 1100+ users as well as providing an all weather surface for training by other sporting codes. The turf is well passed its "use-by" date and is now showing the effects of wear and tear, to the extent that, if not replaced shortly, it could become a safety issue.

Installation of Electronic Scoreboards

As with other sports, hockey is evolving into a much faster paced game and is having to develop innovative ways to control it. One of these is the introduction of quarters and the use of electronic timing for game periods, penalty corner timer and shoot-outs. All these changes are now routinely used internationally and at senior national tournaments. We need to introduce these same systems locally so those players at representative level and seeking higher honours can familiarise themselves with the modern game. There is no Scoreboard facility currently and this is detrimental to the spectator and player experience, particularly for representative matches and tournaments. In a Hockey NZ assessment carried out following the National age-group tournament held here in September 2017 our facilities were recognised as high quality but we were marked down for the lack of electronic Scoreboards. We note that not having scoreboards may work against us holding national tournaments in the future. These tournaments attract around 1,000 visitors. A National Masters tournament (held here in 2016) attracts around 2,000.

18878-1

Through a generous donation and supportive sponsorship Hockey Nelson has obtained sufficient funding for the purchase of the Scoreboards (just over \$28,000) but are seeking Council's contribution to complete installation, including the framework, for the LED screens, power cabling and design and set-up costs.

The Future for Hockey

Hockey New Zealand has recently announced their participation in the International Hockey Federation's initiative, the Hockey Pro League, with 9 International Women's and Men's teams playing home and away based matches every year for the next four years from January through to April. Hockey NZ intends to spread the home games throughout the country and we would love to be able to secure at least one, preferably two men's and women's matches each year. We will not be successful in our bid unless we are able to complete the turf replacement and electronic Scoreboards.

We would lobby to host these games in the later period of the competition (mid-late April) due to Nelson traditionally having a quieter Autumn/Winter in terms of events. We believe this is a great opportunity to attract good numbers of international visitors to the region while showcasing top hockey that will motivate players to strive for higher honours and encourage juniors to take up the sport. Hockey has a great history of achievement and we're proud that local women Anita McLaren (nee Punt) and Kelsey Smith were a big part of the Gold Medal winning Commonwealth Games Team. We have other potential Black Sticks currently playing in the region and we'd love for them to have home-grown opportunities to see and be seen by the world's best teams.

Upgrade to LED Lighting System

The League commences in 2019 and Hockey Nelson is hoping to be hosting games from 2020 onwards. As well as completion of the other projects outlined above, we will also need to upgrade the turf lighting (a Council asset) to international standard and we would anticipate this being carried out in the summer of 2019/2020. We understand Council has a plan for systematically upgrading sports ground lighting because LED lighting is proven to be far more cost efficient and versatile. Hockey Nelson intends to seek funding to assist with this project and hope that Council will be willing to advance it and include it with other planned upgrades for the 2019/2020 financial year. We seek a contribution of around \$120,000 towards the estimated \$185,000 supply and installation costs.

Summary

In summary we support the current proposals in the Nelson City Council LTP for replacement of the Hockey turf and installation of the electronic Scoreboards and would ask that additional consideration be given to advancing the upgrade of the lighting system to LED lights in 2019/2020.

Submission Summary

Nelson's Long Term Plan 2018-28 Consultation Document - Submission #18991

Mrs Eileen Beattie
1955

ladyp772@gmail.com

38 Stephens Bay Road RD 2
Motueka 7197

Speaker? False

Department	Subject	Opinion	Summary
NCC - Infrastructure Services	18. Parks and active recreation		<p>To Whom it may concern,</p> <p>I would like to submit an agreement in principal to the proposal by Nelson Roller Speed Skating Club. We have viewed their submission as a committee, and think it to be a very sound proposal and of great benefit to similar sports such as ours. Whilst we do not envisage using the proposed track very often, it would certainly provide another option for us to hold events on, or train on when not being used by others.</p> <p>The original idea for Nelson City Council to use current road areas we think is flawed and a health and safety issue. Much better to have a purpose built , and suitably sign posted area for these kind of activities.</p> <p>Yours sincerely,</p> <p>Eileen Beattie President Waimea Harrier Club</p>

Printed: 23/04/2018 12:57

Submission Summary

Nelson's Long Term Plan 2018-28 Consultation Document - Submission #19006

Mrs Julie Baxendine
Board Chair Nelson Netball Centre

julie.baxendine@intepeople.co.nz

Intepeople PO Box 1128
Nelson 7040

Speaker? True

Department	Subject	Opinion	Summary
NCC - Infrastructure Services	18. Parks and active recreation		Please find attached our submission document from Nelson Netball Centre

Printed: 23/04/2018 01:46



19006-1

Nelson Netball Centre Incorporated
 PO Box 2119, Stoke, Nelson, 7041
 Saxton Stadium, 142 Saxton Road East, Stoke
 Telephone: 03 547 4450 / 027 496 4956
 Email: lindsay@nelsonnetball.co.nz
www.nelsonnetball.co.nz

Achieving Quality Netball Experiences Together
He tangata He tangata He tangata

Dear Mayor Reese and Councillors,

On behalf of the Board and Staff of the Nelson Netball Centre (NNC), we are pleased to make this submission to the 2018-28 Long Term Plan. We would like to speak to our submission.

NNC has approximately 2,800 affiliated members. These members come from 52 registered clubs and schools. In addition, NNC has large numbers of non-affiliated members who play social netball throughout the summer months in our Twilight Netball and Fast Five Leagues. In total, approximately 300 teams play netball over all competitions. We are grateful for the support Nelson City Council has given to us over the decades of our existence. We also owe thanks to the Saxton Field Sports Stadium Society which, as you know, helped establish a 5 court indoor stadium that includes our Netball administration offices.

NNC is looking to increase our communications with the Council and actively partner in future investments in regional netball. It was very pleasing that the Council has included our request for an upgrade of night-time lighting for the outdoor courts and additional courtside seating. The outdoor lighting will allow for a safer environment for members using the facility at night while also allowing us to extend usage across the courts. The courtside seating will allow us to accommodate the parents, friends, and family of netball players every Saturday during the season, the numbers of which have been increasing significantly in recent years.

Last year the Council was instrumental in linking NNC to the Nelson Regional Development Agency to support the city's hosting of the Superclub tournament. Five international and three NZ franchise teams came to Nelson to play a week-long tournament, which resulted in international coverage for Nelson and our local netball traditions. NNC also participated in discussions to increase the ability for the revamped Trafalgar Centre to film Silver Fern and Tactix games on Sky TV by establishing rigging and a platform that would allow the right cameras and lights to be installed for these games. Nelson has years of experience hosting world-class sporting events and netball – the most popular women's sport in New Zealand – is no exception.

There are a number of ways NNC and the Council can continue to work together in the future.

1. The outdoor netball courts need to be assessed for new surfaces. They were updated about six years ago and we were told the asphalt was a poor quality. We can tell. The courts are not level, there are cracks in some courts that pose a health and safety risk, and the surface areas by drains are sunken and uneven so a new way to drain water could be investigated. We consider this a priority for investigation in the next two years.
2. Although the Trafalgar Centre was updated as mentioned above, we understand the platform for the camera has been moved and its size decreased so that it is too small to allow Sky to film. We hope there are plans to fix this situation so the Trafalgar Centre is able to accommodate netball and other sports that are shown on Sky.
3. Also on the Trafalgar Centre, the lighting rig has to be added on an event by event basis, costing the Council and hosting sports codes money for each instance. A permanent lighting rig would save costs for everyone. NNC would be pleased to assist investigating options and discussing financial support if it means netball games can be viewed by our supporters.
4. The Pavilion was recently gifted from NNC to Council. While ongoing maintenance and replacement of outdated fixtures has been discussed for the second level, the ground level where the changing rooms and public toilets are located are more than 25 years old and have had no updates or renovations. The toilets


19006-1

are quickly blocked on Saturdays during the season and the changing rooms are inadequate to cater for our growing numbers. NNC requests a review of these facilities in the next two years for a future upgrade.

5. NNC requests the maintenance and renewal schedule for all the assets at Saxton Stadium and within the NNC area.

Thank you for the opportunity to contribute to this process. We look forward to increasing the engagement opportunities between the Council and NNC in the future as it regards the growth of our sport and the opportunities for the thousands of women and men who participate in it every winter.

Sincerely,



Julie Baxendine, Chair
Nelson Netball Centre

Submission Summary

Nelson's Long Term Plan 2018-28 Consultation Document - Submission #19007

Mr Andrew Stanton

Committee member Nelson Roller Sports Club - Speed section

hatts@slingshot.co.nz

PO Box 379 Nelson
Nelson 7040

Speaker? True

Department	Subject	Opinion	Summary
NCC - Infrastructure Services	18. Parks and active recreation		<p>This a resend due to an error message i received earlier - apologies if you already received this.</p> <p>Please find attached a submission from Nelson Roller Sports Club - Speed section relating to the Saxton field multi-use sports circuit.</p> <p>Regards, Andrew Stanton Committee member on behalf of Anna Bartlett Chairperson.</p>

Printed: 23/04/2018 01:49



Nelson Roller Sports Club – Speed section

April 2018

Submission on the Nelson City Council draft Long Term Plan 2018-28

Subject: Saxton Field Multi-use sports circuit development

Summary

For a number of years Nelson Roller Sports Club - Speed section (NRSC) have been working with Council on a proposed 1km long multi-use hard surface sports circuit to replace the aging Trafalgar park cycle track. In July 2016 we wrote to both Nelson and Tasman District councils detailing our request for this circuit to be located in the green space between the velodrome and the residential homes situated off Daelyn drive, commonly referred to as the Champion Green.

We understand that money for a new road at Saxton (including car parking) has been proposed in the draft Long Term Plan 2018-28 and council envisage this road will be available to be used as a criterium circuit as well as a venue to hold skate training and racing events. We have discussed this proposal with Cycle Nelson, the regions cycling advocates for the velodrome, and we both share the same concerns that this would be infeasible.

Our submission is that the planned Champion Link road be modified to a cul-de-sac and the requested multi-use sports circuit in the Champion Green be included in the 2018-2028 plan.

Concerns with the current plan

Use of the Champion Link road and Pond car parking project adjacent to the velodrome as a proposed criterium and skating circuit is infeasible for a number of reasons.

- 1) In order to use the road / parking area it would require total closure to vehicles every time a training or completion event were scheduled.
- 2) If the road / parking system were closed there would be no parking for competitors, officials and supporters vehicles
- 3) If the road / parking system were closed velodrome users and users of the proposed BMX track would not have access to their facilities.
- 4) The frequent closure of the road / parking system for skate and cycle training would also impinge on other sports ability, baseball and rugby league, to train within the Champion Green area.

19007-1

NCC LTP 2018-28 SAXTON FIELD MULTI-USE SPORTS CIRCUIT SUBMISSION

23/04/2018

- 5) The design of the turning cycles of the road system, while usable for training, are not appropriate for criterium racing and would increase the risk factor for skating.
- 6) The proposed use of the link road as a cycle/skate race circuit precludes the use of speed humps in this section of road and has the potential to turn this linking road between Champion road and Saxton drive into a vehicle race track which would be hazardous to all users.
- 7) The road system creates a through road from the Saxton field complex to Champion road and effectively splits off the proposed Champion Green pavilion from the sports fields. The proposed pavilion has been designed to incorporate public toilets, emergency medical rooms, storage facilities for baseball, rugby league and cycling, changing rooms for all Champion Green users and a common area that could be used for club rooms and functions. The pavilion should be connected to both the velodrome and the sports field / circuit with safe easy pedestrian ways and soft landscaping. The proposed through road makes this impossible and may drive the need for a second pavilion.

NRSC would like Council to reconsider a purpose built closed sports circuit that can be used by cycling, skating, runners and walkers. We have amended the plan we tabled in 2016 to accommodate the already designed stage 1 of the Champion Link road and believe our plan, when compared against the Champion Link road and Pond car park criterium circuit, has a number of benefits.

- 1) The creation of a separate closed circuit would allow sports codes to access the circuit at all times without the need for road closure or impacting vehicle movements.
- 2) Adequate parking and vehicle movement would always be available as there is no conflict with the roading design.
- 3) Alleviating this conflict with the roading design would facilitate multiple sports being able to train at their facilities simultaneously i.e. Baseball, Rugby league, velodrome cycling, BMX and road skating/cycling
- 4) The design of the proposed circuit has been undertaken to provide for appropriate use to a wide group of sports including road walking, road running, road cycling, road skating and wheel chair athletes in a safe environment with no obstacles.
- 5) The road/parking system designed in conjunction with the proposed sports circuit removes the thru road concept thus allowing more landscaping and pedestrian access from the proposed pavilion to the sports fields while still providing a hard stand area in front of the proposed pavilion for gear drop off and pick up and emergency vehicle access. These benefits are achieved while not compromising on parking space availability.

Our Proposal

Stage 1 of the Champion Link road should be amended to form a cul-de-sac with parking at the northern boundary of proposed stage 1 works rather than a through road.

Stage 2 Link road should be amended to form a cul-de-sac in the vicinity of the velodrome underpass so that pedestrian access to the facility is possible as is gear drop off and pick up.

A pedestrian precinct would be created between the two cul-de-sacs which would facilitate access between the Champion Green and the velodrome allowing both facilities to be serviced by one pavilion saving the design, infrastructure and construction costs of a second pavilion.

That the Champion Green multi-use sports circuit be prioritised over the stage 2 Link road and stage 3 the Pond car park.

That the Champion Green multi-use sports circuit be prioritised over the planned cycle/footpath between the hockey and the cricket pavilions.

Please see the **Supporting Information** section of this document for a draft plan showing the proposed alterations to the Champion Link road and the Champion Green multi-use sports circuit.

Finances

We understand funding for Stage 1 of the Champion Link road has been allocated with construction timetabled for summer 2018/19. A minor alteration to the plan at this stage to incorporate a cul-de-sac rather than a through road will have negligible effect on design costs and may result in a small saving in construction costs due to the reduced scope.

The planning of the Stage 2 and Stage 3 (being the "pond" car park road and parking) should be continued with, however the planning and construction of the multi-use sports circuit should take precedence over the 2nd and 3rd stage roading and parking construction phase.

With Stage 2 and 3 rescheduled a small percentage of the allocated funding to plan and construct the Link road and Pond car park could be diverted to plan/construct the sports circuit during 2018/19. In addition Council has \$220k allocated to cycle/path development at Saxton field in 2018/19, if this were repurposed from the draft project of paving between the hockey and the cricket pavilions and put into the sports circuit this would fund 50% of the cost of the proposed circuit without any impact on Council budget.

Further to this if a commitment by Council was made to this timeframe this would enable the NRSC and other interested parties to begin the process of applying to funding agencies to help provide the outstanding capital required to construct and complete the project.

If the plan proposed by the NRSC to stop the link road and provide a pedestrian precinct between the two access road cul-de-sac's were accepted then there would be no requirement to build a second pavilion to service the Champion Green. This would result in considerable savings in design, construction and infrastructure investment.

19007-1

NCC LTP 2018-28 SAXTON FIELD MULTI-USE SPORTS CIRCUIT SUBMISSION

23/04/2018

Participation

Nelson Roller Sports Club has an active membership approaching 150 members across our 4 codes of Hockey, Derby, Artistic and Speed. Our membership spans both Nelson and Tasman districts and we open our doors to an excess of 8000 recreational skaters annually through our public sessions and private hiring of the Tahunanui rink. We expect a large percentage of these skaters, both recreational and across other NRSC codes would use this circuit on a regular basis. Figures from our national body (New Zealand Federation of Roller Sports Inc.) suggest as many as 1 in 4 households either participate or have participated in recreational skating at some time or other. The pleasant recreation environment and the safe training space, void of vehicular traffic, that the Champion Green multi-use sports circuit would provide would likely see more persons make the transition from recreation to sports skating which would add to the steady growth the NRSC has seen over recent years.

As well as skaters runners and walkers from Athletics Nelson and Waimea Harriers and cyclists from Cycle Nelson and the Tasman Wheelers have all shown a great deal of interest in the Champion Green circuit. Cycle Nelson and NRSC share a similar desire for a road training venue devoid of the hazards that motor vehicles bring. This is especially sort after for bringing young competitors into the sport. Having a safe environment for newcomers to our sports to gain confidence is very important in order for us to continue to grow our respective sports. A large number of recreational walkers and joggers would also choose to use the circuit due to its all-weather surface and the pleasant environment that Saxton Field presents. Athletics Nelson and Waimea Harriers have both indicated they will submit to council in their own right to in support of our submission.

Wider Benefits

The Champion Green Sports Circuit would be a National and international sports circuit capable of attracting a range of sports especially Inline Speed Skating, Road Running, Para fed wheelchair racing and criterium style cycling. There is considerable evidence that a number of high profile National events could be secured at the sports circuit if it was available. These events include;

- a. National road skating championships Jan 2020
- b. Oceania road skating championships April 2020
- c. NZ road cycling age group championships
- d. National secondary school road running championships
- e. National secondary school road cycling championships
- f. South island Masters games events including the sports of Road cycling, Road walking, Road running and Road skating
- g. National road cycling training squads
- h. National road skating training squads
- i. National road skating championships Jan 2022
- j. Oceania road skating championships April 2022

The facility would also cater for community events such as the Relay for life fundraising event and the Able Tasman cycle challenge.

Contact person

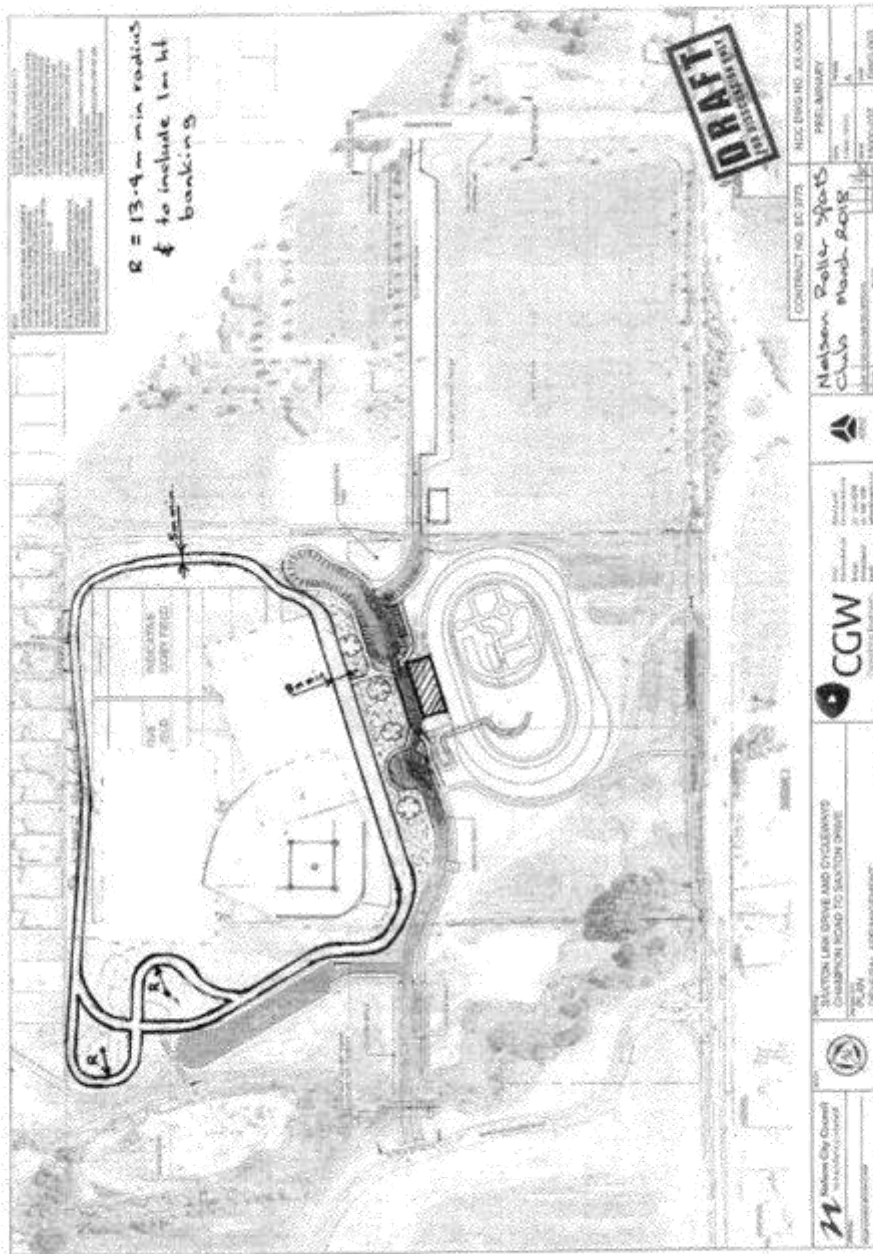
For further information please contact the NRSC - Speed section Chair Anna Bartlett;

Email; skatetacular@windowlive.com

Mob; 027 277 0359

Supporting Information

Draft Plan



Endorsement from one of NZ's most successful Double Olympians

Chris Nicholson from Nelson has been involved in cycling, skating and triathlon at an international and Olympic level over the last 25 years around the world.

- *Regarding the proposed 1km circuit for Saxton Field I would like to express my enthusiasm for this development.*
- *I believe this track would be of great benefit to all of the above sports in Nelson as well as general public.*
- *I observed a similar circuit in London which was very well utilized as it provides a much needed facility where the traffic was an issue and in addition a natural meeting point.*
- *Speed skating in Nelson is developing very well but as we only have a 100m indoor track an outdoor longer track would open up a lot of opportunity for training safely and racing over longer distances.*
- *Cycling currently gets an excellent turn out to training nights at Trafalgar Park even though it is far from an ideal facility.*
- *When I was involved in triathlon it would have been great to have a place where it was possible to run and cycle at the same place in a safe way.*
- *The circuit I rode in London was used for training whenever someone wanted to have a good ride without traffic and also have a good chance that there would be someone to ride with. It was also used for racing.*
- *For speed skating I have done quite a lot of training on the Nelson cycle paths but they are far from ideal.*
- *Often the paths are too rough or narrow to skate on as well as having dogs and pedestrians and a lot of roads to cross over.*
- *It is not really OK for the younger skaters to use the cycle paths safely so as a result we miss out on having much outdoor training.*
- *We have used the car park at Saxton Field but this is too small and subject to traffic.*
- *Earlier this year I suffered a broken jaw due to the track being too small.*
- *The idea of a 1km circuit would be well complimented by the 333m cycle track but they are not the same thing. The velodrome is really for specific track cycling and not road training or skating.*
- *I am really hoping this project goes ahead.*

Chris Nicholson
Double (Skating & Cycling) Olympic Games Representative
International Triathlete

19007-1

NCC LTP 2018-28 SAXTON FIELD MULTI-USE SPORTS CIRCUIT SUBMISSION

23/04/2018

Letter to Council in 2016

Nelson Roller Sports Club Speed Section

14 July 2016

To whom it may concern

Re: Saxton Field Development
Specific location: "Open Concert Space"



This location has been identified by the Nelson Roller Sports Club Speed Skating Section as a potential site to create a 1km length multi-use hard surface sports track to replace the existing Trafalgar Park cycle track.

Speed skating in Nelson is going through a growth stage at present and for the past few years has been without a suitable outdoor venue to train or compete on. Nelson is currently the second largest speed skating club in New Zealand and for further positive growth to occur we require a dedicated outdoor "road" track for training and competition purposes.

Speed skating consists of three main disciplines:

1. *Flat track racing:*
 100m indoor tracks such as Tahunanui skating rink and stadiums such as Trafalgar Centre or Saxton Stadium are used.
2. *Bank track racing:*
 200m purpose-built 6m width banked track. Blenheim has a bank track facility.
3. *Road racing:*
 Often run on Go-Kart tracks due to difficulty in closing down roads. The local kart track is not in good condition and nor is Trafalgar Park which is the venue that has been used in the past for both New Zealand National Championships and for Oceania Championships, and for training.

Within the New Zealand Federation of Roller Sports rules, a Road Track as a "closed circuit" should be no longer than 1000m and be a minimum width of 5m. A new event is being introduced to Road competition, being a three person side-by-side 100m sprint. This will require a straight section of the track to be a minimum of

19007-1

NCC LTP 2018-28 SAXTON FIELD MULTI-USE SPORTS CIRCUIT SUBMISSION

23/04/2018

approximately 120m long and a minimum of 8m in width. The ideal surface for a "road" track is asphaltic concrete.

In creating a track incorporating these specifications Nelson would be the first in New Zealand to have a purpose-built compliant facility. This would potentially allow us to not only host a New Zealand National Championships, but also Oceania Championships and perhaps World Championships.

The proposed facility outlined above could be created as a multi-use facility. At a measured 1km distance, such a track would be used by both competitive and recreational cyclists, competitive and recreational walkers, and competitive and recreational road runners. The Relay For Life fundraiser event would find the facility ideal.

Creating an independent circuit with no vehicle traffic will create a safe environment for all users. Having a hard surface surrounding a grassed concert area will provide light vehicle access to all points around the perimeter of the venue making set-up and break-down easy.

Nelson Roller Sports would make use of the circuit for both training and competition. Regular annual competitions would include:

1. Top of the South Tour (in March);
2. Queen's Birthday Racing events, including South Island Marathon Champs (in June);
3. Nelson Open Day (in October);
4. Nelson Club Championships (in November).

New Zealand National Championships could occur as frequently as every second year (in January).

Oceania Championships could occur every four years (in April).

World Championships on application and approval.

Regular training would occur on a minimum of three days a week all year round.

Some training time could be shared with other users.

Being adjacent to the new Cycle Velodrome would allow combined use of changing room/toilet facilities and potential high use by road cyclists for training purposes.

Being a measured 1km distance allows easy calculation of distances travelled including a marathon or half marathon.

The Nelson Roller Sports Club is prepared to approach funding agencies to help provide the capital required to construct and complete this project. As this facility is also potentially a high public use facility for the entire district, a substantial contribution from both Nelson City Council and Tasman District Council would seem

19007-1

NCC LTP 2018-28 SAXTON FIELD MULTI-USE SPORTS CIRCUIT SUBMISSION

23/04/2018

appropriate. The ability to host National and International competitions will also bring revenue to the wider community of Nelson and Richmond.

No in-depth costings have been carried out at this time, however an estimated costing, calculated by a quantity surveyor involved in the roading industry, using 250mm depth subbase and basecourse, 5m width with asphaltic concrete surface and including survey and establishment costs is:

approximately \$365 per lineal metre
= \$365,000 + 10% contingency
= \$400,000 for 1 km.

We look forward to further consultation and discussion.

Yours faithfully



Anna Bartlett
Chairperson
NRSC Speed Skating

contact:
Alan Bartlett
027 4141909
b.design@lycos.com

NRSC Resume**Nelson Roller Sports Club - Speed section**

2018 Synopsis

Club members (NRSC)	approaching 150 across all codes
Competitive speed skaters	30
High performance Development Squad	15

National representation status

2017	24 skaters	Road and flat track disciplines	35 medals
2018	23 skaters	Road and flat track disciplines	41 medals

The club currently has 4 national record holders that have 7 national record times between them.
The club also hold a total of 28 national titles

International representation

2017	7 skaters	Oceania competition	2 Gold medals
2018	4 skaters	Oceania competition	7 Gold medals

Projected representation

2019	Nationals championships	28 skaters	
2019	Oceania championships	10 skaters	
2020	Nationals championships	32 skaters	Request has been made to Host in Nelson
2020	Oceania championships	10 skaters	Request has been made to Host in Nelson
2020	Junior world championships	3 skaters	
2021	Oceania championships	12 skaters	
2021	Junior world championships	4 skaters	

The biggest impediment to Nelson Skaters representing NZ on the international stage in the future is the lack of a dedicated safe outdoor training venue. With the construction of a dedicated sports circuit we would predict beyond 2021 to have Nelson skaters at Senior world championships and Junior Olympic Games. Nelson is the fastest growing speed club in NZ and if this growth is to continue we need a road training venue without the hazards of public vehicular traffic.

Submission Summary

Nelson's Long Term Plan 2018-28 Consultation Document - Submission #19021

Mr Eric Verstappen
President Athletics Nelson

heatheric.verstappen@gmail.com

PO Box 480, Nelson c/o 18 Melrose Tce Nelson
Nelson 7010

03 5480322
03 5480322

Speaker? False

Department	Subject	Opinion	Summary
NCC - Infrastructure Services	18. Parks and active recreation		<p>To Whom it may concern,</p> <p>I would like to submit an agreement in principal to the proposal by Nelson Roller Speed Skating Club. This is for a 1km long, multi-use, all weather hard surface sports track at Saxton Field adjacent to the new velodrome.</p> <p>The Athletics Nelson Executive have viewed their submission and consider the proposal would provide a significant additional benefit to a range of recreational users and be a worthy addition to the facilities provided at Saxton Field.</p> <p>Athletics Nelson use the internal road and adjacent cycleway network during its annual half marathon event, and have hosted road race and race walk events within the complex during such events as the SI Masters Games. Having an additional circuit as proposed would enhance safe, off-road, all weather athletic competition and training opportunities for a range of users as well as the public at large, particularly given the shortage of footpaths within the complex.</p>

Printed: 23/04/2018 02:48

Submission Summary

Nelson's Long Term Plan 2018-28 Consultation Document - Submission #19060

Mr Ian Paterson

NBF District Executive, Grounds and Facilities Nelson Bays Football Inc

ian@ts.co.nz

PO Box 2015
Stoke 7041

Speaker? True

Department	Subject	Opinion	Summary
NCC - Infrastructure Services	18. Parks and active recreation		Please see attached.

Printed: 24/04/2018 09:47

Nelson Bays Football

Submission to Nelson City Council Long Term Plan 2018-28

April 2018

Who we are

- NBF (Nelson Bays Football Inc) is the Regional Sports Organisation (RSO) for Football in the Nelson and Tasman region. It is a district branch of Mainland Football which is itself a NZ Football federation.
- NBF very much appreciates the provision of playing fields and facilities for our code. In 2017 there were 2958 participants in over 160 teams in the winter competition (including Tasman) from First Kicks to Seniors, a growth of 25% over the preceding 10 years. Football has the largest participation level with twice as many teams as Rugby.
- Players and teams are drawn from 3 Clubs and 3 high schools. At least one of these – FC Nelson – has previously made its own submissions to NCC regarding grounds and facilities which has NBF support.
- In addition to football, NBF offers Futsal – another FIFA code - which is generally played indoors. This is a rapidly growing option.
- NBF is the licence holder for the National Premier League and National Youth Premier Leagues. The teams play as Tasman United (TU). NBF has also fielded a team in the Mainland Women’s Premier League although there will not be an entry in 2018.
- There are other competitions which NBF assists with or organises such as the NZ Secondary School’s tournament, Master’s Games Football and the Jack McKnight representative tournament.
- NBF is also responsible for running the youth representative programme for Girls and Boys in 11th to 16th grade. Selected teams participate in representative tournaments in various South Island locations. In 2017 there were 12 representative teams.
- NBF runs the TU Academy and Federation Training Centre programmes which mostly use Saxton Field.
- Other football which uses NCC grounds includes the Summer Football leagues run by 2 clubs using Saxton and Neale Park.
- There is also a significant level of social football outside NBF’s sphere of influence particularly amongst some of the migrant communities.
- And NBF provides the ‘Football in Schools’ programme where experienced coaches deliver the football experience in schools.

What we need

-
- 1. Improved playing surfaces, more training grounds with lights**
 - 2. Artificial turfs**
 - 3. Improved access to Trafalgar Park, or the urgent development of a high quality ground with facilities suitable for regional, national and/or international events.**
-

NBF’s detailed submission is attached.

Availability and quality of playing and training surfaces.

1. NCC recently commissioned a report from GLG Sport Spaces and Facilities – ‘*Supply and Demand – Winter Sports Fields*’ which concluded that there are enough playing surfaces but not enough training grounds with suitable lighting. While NBF does not necessarily agree with all its findings and recommendations, it is none the less a helpful and timely report on the state and status of NCC’s winter code sports field inventory and it presents some options for Council and the sports codes to consider.
2. An exception is reliable access to a high performance premier pitch for provincial, national and potentially international fixtures. Representations on this are in paragraphs 16-22 below. NBF, the holder of the National League licence, has major concerns about this and will be seeking urgent engagement with Council about ways to redress the situation.
3. NBF agrees that in general there are enough playing fields for our code although there are some points of contention over the allocation between codes, Tahunanui is a case in point. But the report does not adequately cover the additional ground use demands generated by academy, representative, secondary schools, masters and Mainland tournament events.
4. The report commented on the capacity of playing fields which are generally poor. The GLG report (page 15) commented that while improved drainage is likely to improve the quality of the field, it may not add significantly to its playing capacity. It said that the evidence is that few games are cancelled due to rain. NBF believes this is understated and doesn’t recognise things like pitch changes and deferred games, or the disruption to training schedules. The incidence of rain disruption is higher than the report suggests.
5. The evidence is that there will be more weather and rain disruptions, and extreme adverse weather events. Rainfall for each of the first 3 months of 2018 was way above average (566mm recorded, 157 average).
6. NBF agrees that the quality of playing fields generally are not great but does not agree that draining will not improve capability. A number are quickly rendered unplayable after even moderate amounts of rain. NBF believes that improved drainage will help but that improved pitch construction needs to be undertaken. Options for consideration are set out in the GLG report.
7. The facilities at most grounds are at least adequate, but there are some exceptions. Guppy Park for example is poorly served. Members observe that the fields that have cricket wickets on them generally have better facilities for example the Botanics and Ngawhatu. The ground known as Saxton 1, where Mainland Premier League (MPL) and some NPL games have been held is substandard. NBF has been advised that the visiting club from Christchurch at the MPL fixture on 21 April 2018 has lodged a complaint about the poor quality of the ground.

19060-1

8. NCC undertakes ground maintenance and preparation of the pitches. NBF works well with the staff involved and appreciates their work and cooperation, but things don't always go according to plan. This year the work began late with the result that some key pitches were simply not ready (eg Guppy Park). In another case, in mid-April a trench was dug to lay services right across one of the Neale Park pitches damaging a goal in the process. These are not pitches where work is delayed by summer code needs such as cricket wickets.
9. Training grounds are an issue as the GLG report states. Keeping training activity off playing fields helps reduce the wear and tear on them, but sometimes they get used because there are no alternatives.
10. Some training areas lack lighting as well. The GLG report in its summary states:

Training lights are restricted to dedicated training areas and a number of other small fields. It is important to recognise that over the winter period that a large proportion of club training does not start until after 6pm. Due to the limited access to training lights, the demand is concentrated into the few areas available increasing the competition for space and wear and tear on the field.

11. The report, on page 20, concludes with some recommendations:
 - a. *To review current field allocations to allow training on senior / competition fields.*
 - b. *Develop additional dedicated training areas by consolidating competition play on fewer fields and converting the surplus fields to floodlit training (DTAs)*
 - c. *Undertake a field improvement programme to increase field capacity (through drainage and addition of floodlighting.*

12. NBF supports the overall tenor of these recommendations providing that the number of playing surfaces are not compromised. It would also like NCC to investigate ways of improving the quality of the pitches in addition to drainage as discussed in the report, and the provision of more and better quality lit training areas.

Artificial Pitches

13. NBF submits that the time has come for artificial pitches to be installed. These are becoming more common and although expensive to install, the GLG report shows that they can be cost effective, provide a much better standard of playing surface
14. The GLC report considers the merits of artificial pitches and presents it as an option on page 20:
 - d. *Develop an artificial turf field to be used by rugby, football and league for representative and high performance training, freeing up capacity within the community field network.*

19060-1

12. Elsewhere it discusses the need to ensure that artificial pitches are not captured by clubs or RSOs.
 13. NBF recognises that ideally codes should be able to share grounds and other facilities. However our experience at grounds we share with rugby – Neale Park and Tahunanui being examples – are not positive. Communication is difficult and common ground is difficult to reach. Further down in this submission we submit on our experiences and frustrations with Trafalgar Park which Tasman United uses for National League games – our experience is that rugby regularly breaches protocols and we are left feeling like poor cousins.
 14. Having said that it can work. Dunedin has approved \$1m to go towards 2 artificial turf pitches. One would be for football, one for joint rugby and football use with a cricket wicket in the middle. Football South (NZ Football Federation No 7) obtained a contribution from FIFA of \$425,000 and Otago Community Trust contributed \$600,000. Other funding organisation and individuals have contributed to the \$3,000,000 budget.
 15. The introduction of all-weather artificial pitches will greatly reduce the risk of having to cancel high profile fixtures. Such events bring an economic benefit to the region and our ability to attract the highest level games here will be influenced by the quality and reliability of ground and facilities.
16. NBF recommends that NCC initiates an investigation to explore options for the establishment of artificial turfs in Nelson, and makes provision for this in the 2019/20 Annual Plan.

A High Performance Venue: Trafalgar Park or elsewhere.

17. As noted above Nelson Bays Football is the Regional Sports Authority for football in the Nelson Tasman Region. NBF has in the past been able to function effectively without needing access to high quality, independent and secure playing pitches and facilities.
18. With Tasman United's entry into the National Premier League that has changed.
19. Happily, Trafalgar Park was available to us and that met and potentially could continue to meet our needs except for one major issue. Unfortunately for us rugby gets priority at the critical time of the year when the National Premier League kicks off.
20. This is exacerbated by the need to renovate the ground following the conclusion of the rugby season. The NPL kicks off in mid-October but if the Makos make the rugby playoffs and get awarded home games, its season could continue until the end of October. NCC then requires 4-6 weeks to renovate the ground. This could mean it is not available until as late as Round 8 (early December) which is as much as half way through the round robin of 16 fixtures of the NPL.

19060-1

21. Earlier in the year we had to vacate Trafalgar Park early so that major pitch reconstruction could occur ahead of the rugby season and the pending All Blacks Puma's test in August. The last 4 home games were played at Saxton Field. This proved to be unsatisfactory both on and off the pitch. TU game day donations dropped substantially due to much lower attendances with people bypassing the programme and merchandise sales booth.
22. This is **seriously unacceptable** to us and we have signalled to Council that urgent discussions are needed to find a solutions.
23. If this problem cannot be resolved NBF wishes to explore options for establishing a regional facility, independent of clubs, and available for high level fixtures. Football is by a long way the largest code in the regions but is the only major one that does not have a purpose built facility capable of hosting premier league, national and international events. Nelson did not host teams at the FIFA U20 World Cup in 2015 but it could have been possible (Dunedin, New Plymouth and Whangarei were all host cities).
24. Apart from the beginning of the season disruption issue, if NZ Football decided to switch the NPL to a winter tournament (this has been considered), there would be nowhere suitable for TU to play anyway so this has to be addressed.

25. Looking to the future NBF wants to explore with Council options for such a facility. Sport Tasman, in conjunction with Council, is leading the development of a regional sports and recreational facilities strategy for the top of the South Island and NBF expects to participate fully in this project.

26. As stated in paragraph 21 above, NBF seeks urgent discussions with Council to work out short term and long term solutions to ensure our presence in the NPL is sustainable.

Submission Summary

Nelson's Long Term Plan 2018-28 Consultation Document - Submission #19105

Ms Jane Murray
NMDHB Public Health Service

jane.murray@nmdhb.govt.nz

Nelson

543 7805

543 7805

Speaker? True

Department	Subject	Opinion	Summary
NCC - Community Services	19. Other feedback		See attached.
NCC - Community Services	17. Community services		See attached.
NCC - Infrastructure Services	01. Council priority - Infrastructure		See attached.
NCC - Environmental Management	02. Council priority - Environment		See attached.
NCC - Infrastructure Services	12. Transport		See attached.
NCC - Infrastructure Services	13. Water supply		See attached.
NCC - Infrastructure Services	14. Wastewater		See attached.
NCC - Infrastructure Services	15. Stormwater and Flood protection		See attached.
NCC - Infrastructure Services	16. Solid Waste		See attached.
NCC - Community Services	05. Library re-development		See attached.

Printed: 24/04/2018 11:31

NCC - Community Services	06. Spotlight on Stoke		See attached.
NCC - Infrastructure Services	18. Parks and active recreation		See attached.
NCC - Corporate Services	09. Brook Waimarama Sanctuary		See attached.
NCC - Community Services	07. Community events		See attached.

Printed: 24/04/2018 11:31

19105-1

Bev McShea

From: Submissions
Sent: Monday, 23 April 2018 2:42 p.m.
To: Administration
Subject: FW: Submission on NCC Consultation Document for Long Term Plan 2018-2028
Attachments: NCC Consultation Document for the Long Term Plan 2018-2028.pdf
Categories: Bev

From: Gaylene Corlett
Sent: Monday, April 23, 2018 2:42:07 AM (UTC+00:00) Monrovia, Reykjavik
To: Submissions
Cc: Jane Murray
Subject: Submission on NCC Consultation Document for Long Term Plan 2018-2028

Good afternoon

Please find at submission from Nelson Marlborough DHB on the NCC Consultation Document for the Long Term Plan 2018-2028.

Kind regards,

Gaylene


Gaylene Corlett, Executive Assistant to Peter Bramley, Chief Executive, and
 Jenny Black, Board Chair, Nelson Marlborough Health
 Private Bag 18, Nelson 7042, New Zealand Office: 03 546 1723 Cell: 027 2466652
 Mail: Gaylene.corlett@nmdhb.govt.nz



Please consider the environment before printing this email

DISCLAIMER: This electronic message together with any attachments is confidential. If you are not the intended recipient, do not copy, disclose or use the contents in any way. Please also advise us by return e-mail that you have received the message and then please destroy. NMDHB is not responsible for any changes made to this message and / or any attachments after sending by NMDHB. We use virus scanning software but exclude of liability for viruses or anything similar in this email or any attachment.

19105-1



**Submission on Nelson
City Council Consultation
Document for the Long
Term Plan 2018-2028**

23 April 2018

For more information please contact:
Jane Murray
NMDHB Public Health Service
Email: jane.murray@nmdhb.govt.nz
Phone: (03) 543 7805

Page 1 of 21

19105-1

Most of these determinants of health fall outside of the health sector. In order to effectively improve health outcomes and the overall quality of life, the health board needs to work collaboratively with local government.

The table overleaf page outlines specific areas of the draft Plan that NMH wishes to support and includes a series of recommendations for the Council to consider.

Of particular relevance to this submission, key issues where NCC and NMH can effectively work together are drinking water treatment, active transport and physical activity, and healthy homes and housing affordability.

Conclusion

NMH believes that the Nelson City Council Consultation Document and supporting information on the Long Term Plan 2018-2028 generally identifies key issues and reflects the current needs of the district.

NMH would like to continue working with NCC on these issues.

NMH looks forward to continuing to work in partnership with NCC on activities that will be of direct benefit to the wellbeing and health of the community, and encourages NCC's continued active commitment to leading and investing in social development of our community.

NMH **wish to be heard** in support of its submission.

Yours sincerely



Peter Bramley
Chief Executive
Peter.bramley@nmdhb.govt.nz

19105-1

Draft Plan Topic	Discussion	Recommendation / Support
<p data-bbox="488 416 719 475">Draft Community Outcomes</p> <p data-bbox="488 528 651 587">(Community Outcomes)</p>	<p data-bbox="736 411 1471 496">NMH supports the overall intention of the Community Outcomes but recommends further refining to enable greater environmental, cultural and social wellbeing.</p> <p data-bbox="736 501 1471 639">NMH notes that the Community Outcomes for NCC mirror that of the Tasman District Council (TDC), and TDC have recently proposed some changes to their Outcomes that will strengthen their ability to enable wellbeing. NMH recommends that NCC adopts the positive similar changes.</p> <p data-bbox="736 644 1471 751">Outcome 1: that the first outcome regarding the natural environment will be <u>sustainably managed</u>, this aligns the community outcomes with the purpose of the Resource Management Act.</p> <p data-bbox="736 756 1471 841">Outcome 2: that <u>accessible</u> is added to the descriptors for urban and rural environments. It is important that people of all ages and abilities can have easy access in the region.</p> <p data-bbox="736 845 1471 930">Outcome: that <u>cultural</u> is added to the Outcome outlining communities have an access to a range of facilities and activities that reflect their sense of identity.</p> <p data-bbox="736 967 1471 1106">NMH is pleased to see that NCC has included wording regarding “supporting the development of a range of affordable, healthy and energy-efficient housing in our residential areas” as housing can have a large impact on people’s health and wellbeing. (Community Outcomes, pg. 1)</p> <p data-bbox="736 1110 1471 1249">NMH notes that the Outcome pertaining to fostering partnerships does not specifically mention the important role of Treaty partners or fostering Maori participation. In terms of promoting equity, the Long Term Plan outcomes would be strengthened by including this.</p>	<p data-bbox="1489 411 1888 518"><i>Recommendation:</i> NCC alters its Community Outcomes so that they strengthen their ability to enable wellbeing.</p>

19105-1

Draft Plan Topic	Discussion	Recommendation / Support
Collaborative work	NCC and NMH has a statutory responsibility to ensuring the wellbeing of communities. NMH would like the opportunity to continue to engage with NCC at a strategic and operational level on work that intersects both organisations. Joint work plans could be used to prioritise and monitor work between NMH and NCC	<i>Recommendation:</i> NCC and NMH consider formally collaborating on work that is common to both organisations.
Infrastructure Strategy	<p>Infrastructure Objectives</p> <p>NMH supports the four objectives:</p> <ul style="list-style-type: none"> • Increase resilience to natural hazards • Maintain and renew existing assets • Provide infrastructure to enable growth and development • Maintain or improve environmental outcomes. <p>These priority areas will result in systems that can meet the current needs of the population as well be flexible enough to cater for future populations.</p>	
Climate Change	In December 2017, central government provided guidance for local government on "Coastal Hazards and Climate Change". It is encouraging to see that NCC will adopt this guidance into its planning processes. NMH would like to participate and add value to the multi-disciplinary team that will create a Climate Change Plan (Infrastructure Plan, pg 20).	<i>Recommendation:</i> NMH is part of the multi-disciplinary team involved in developing the Coastal Hazards and Climate Change plan (Infrastructure Plan, pg 20).
Transportation	NMH notes that NCC along with TDC and NZTA is currently preparing a network operating framework for Richmond which considers all modes of transport and includes establishing walking and cycling corridors, intersection improvements and the creations of hubs where different transport modes can interact. NMH supports NCC's intention to fund a range of Active	<p>NMH supports the following matters shown (Council Activities Summaries, pg. 5)</p> <ul style="list-style-type: none"> • Re-sealing programme ensuring road pavements are kept waterproofed,

Page 5 of 21

19105-1

Draft Plan Topic	Discussion	Recommendation / Support
	<p>Transport initiatives. Investment in active transport delivers a range of social, environmental and economic benefits which include reduced congestion, emissions, and increased health and wellbeing. Active transport is becoming increasingly important for all age groups. For Nelson's ageing population, active transport offers people greater transport choice in terms of affordability and accessibility.</p> <p>NMH have identified that constraints on the transport network are leading to delays in travel times. Further investment into active transport modes will lead to more people using walking, cycling and buses as a mode of transport. This can lessen the impact of congestion as well as provide for physical and mental health benefits.</p> <p>NMH notes that NCC plans to encourage people to use active modes through delivery of education and promotion. NMH supports the Travel Demand Management (TDM) activities noted on pg. 54 Table T2: Capacity and Safety Pressures (Infrastructure Strategy). Travel planning campaigns for larger businesses and schools can also help transition people into alternative transport modes. NMH is interested in working closely with NCC on travel planning.</p>	<p>and to maintain safety required skid resistance levels</p> <ul style="list-style-type: none"> • Improved central city cycling and walking facilities • Tahunanui cycle network • A Stoke East/West connection to improve cycling and walking routes <p>The continuation of the footpath programme</p> <ul style="list-style-type: none"> • The upgrading of all roads with an asphalt cement surface to reduce noise pollution. <p>NMH supports the TDM activities (Infrastructure Strategy pg 54) and is interested in working with NCC on travel planning.</p>
<p>Walking and Cycle Infrastructure</p>	<p>NCC has clearly demonstrated a commitment to cycling in the region through its cycle trails.</p> <p>The draft Government Policy Statement on Land Transport (GPS) 2018/19 identifies support for mode shifts to lower</p>	<p><i>Recommendation:</i> that NCC continues to review its pedestrian and cycle network to ensure that there is easy connectivity across the region.</p> <p><i>Recommendation:</i> that NCC assesses the number and quality of the bike</p>

19105-1

Draft Plan Topic	Discussion	Recommendation / Support
	<p>emissions forms of transport including walking and cycling. This recognises the importance of urban form for creating liveable cities that value public space. NMH views the development of walking and cycling infrastructure as fundamental for the promotion of active transport and its associated health benefits. In light of the direction of the GPS, NMH recommends that reduced car use be given a great profile in Council plans with further investment given to promoting public transport use, walking and cycling.</p> <p>In addition, to the construction of cycle paths, investment in good quality, easily accessible cycle parking is critical to increasing cycling as a mode of transport.² Therefore the number and quality of covered bike stands in the area should be assessed to see if it adequately meets demand. Cyclists need to be able to easily lock the frame of the bike directly to the bike stand, many old style racks only allow the front wheel to be locked which is not as secure given that most bikes have quick releases on their front wheels.</p>	<p>stands in the region. <i>Recommendation:</i> that reduced car use be given a great profile in Council plans with further investment given to promoting public transport use, walking and cycling.</p>
<p>Bus Infrastructure <i>Consultation document, pg 17)</i></p>	<p>NMH supports the proposed construction of a new bus exchange. A safe weather proof bus exchange would encourage more people to use the bus services. NMH recommends that NCC work closely with the Youth Council on the internal design of the bus exchange. The original Christchurch Bus Exchange design led to a range of anti-social behaviour, such as bullying and petty crime, making it unsafe and unappealing for passengers, especially youth and the elderly. In the design of the new exchange post-earthquake, Christchurch City Council</p>	<p>NMH supports the new bus exchange. <i>Recommendation:</i> that NCC invest in both a CPTED and Youth Relevant Design Audit of a new bus exchange.</p>

² Austroads (2016) *Bicycle Parking Facilities: Guidelines for Design and Installation*, Retrieved from <https://www.onlinepublications.austroads.com.au/items/AP-R527-16>
 Page 7 of 21

19105-1

Draft Plan Topic	Discussion	Recommendation / Support
	(CCC) worked very closely with the Youth Council undertaking a Crime Prevention through Environmental Design (CPTED) audit and a youth-relevant design audit. This type of audit assesses spaces to see if they are safe, appealing for young people, accessible, youth friendly and resourced. ³ The result has been a safe and inviting public space. NMH recommends that a Youth Relevant Design Audit and CPTED audit be part of the Exchange design.	
<p>Nelson Southern Link Investigation</p> <p><i>Sh6 Rocks Road Walking and Cycling Project</i></p> <p><i>(Consultation document, pg 23)</i></p>	<p>NMH notes that a detailed business case will be developed for the Nelson Southern Link and that this business case will include further public engagement and formal consultation. NMH staff wish to engage in the targeted community engagement sessions.</p> <p>In 2010, NMH completed a Health Impact Assessment (HIA) on the four options in the original Nelson Arterial Road Study⁴ and encourages Nelson City Council (NCC) to include the HIA findings relating to health impacts of the different options into the detailed business case. All of the options identified to date have potential health impacts. It is important that these are considered, alongside the findings in the 2010 Social Impact</p>	<p><i>Recommendation:</i> that the Health Impact Assessment findings of the Nelson Arterial Road Study are included in the Nelson Southern Link Investigation.</p> <p><i>Recommendation:</i> NMH are able to attend targeted community engagement sessions for the Nelson Southern Link.</p> <p>Refer to Appendix A: Summary of Impacts</p>

³ Youth Relevant Design http://www.youthvoicecanterbury.org.nz/uploads/2/9/9/1/29919545/check_card_email_version_.pdf

⁴ <http://nelson.govt.nz/assets/Our-council/Downloads/Plans-strategies-policies/ATS-health-impact-assessment-stage-3.pdf>

A (Part time clearways) will have an overall negative impact on health but the impacts will be low. There is scope for mitigating some of the negative impacts on health. Option B (Southern Arterial) will have an overall negative impact on health. Additional noise, social severance and air pollution will have a moderate negative health impact on the Victory Community. While some impacts can be reduced it will not be feasible to mitigate all of the health impacts. Option H SH6 Four Laning: This option will have an overall negative impact on health. Its impact on social severance will be major and the impact on rates and access to services will be moderate. It will not be feasible to mitigate all of the health impacts. Option I Waimea/Rutherford 4 Laning: This option will have an overall negative impact on health. It will have a major impact on severance and a moderate impact on safety, rates and access to services. It will not be feasible to mitigate all of the health impacts.

19105-1

Draft Plan Topic	Discussion	Recommendation / Support
	<p>Assessment, in determining the best option for the community.</p> <p>Table T5 (Infrastructure Strategy pg 57) shows that NCC's preferred option to address network capacity is to integrate the Southern Link with additional measures to maintain level of service. NMH supports those measures that will</p> <ul style="list-style-type: none"> • provide active transport opportunities via a separated pathway between the central city and Bishopdale • manage car parking demand • provide a clear road hierarchy especially in northern Stoke <p>These measures will enable people to have safer transport options regardless of transport mode.</p>	
Technological Change in Transport	<p>Rapid technological change may lead to different demands on the transport network. Table T6 (Infrastructure Strategy pg 58) shows that NCC's preferred option includes the adoption of a nimble structure and provision for seed funding for demonstration projects that raise public awareness. NMH encourages the Council to invest in technology that will either promote active transport and/or reduces the environmental effects of transport i.e. emission free technology, noise and community severance.</p>	<p><i>Recommendation:</i> that any investment into new technologies supports either people's physical wellbeing and/or environmental wellbeing.</p>

19105-1

Draft Plan Topic	Discussion	Recommendation / Support
Water Supply	<p>NMH does not wish to comment on supply options (i.e. Waimea Dam versus alternative supplies or storage facilities) as it considers that falls more appropriately with the community given the wide range of considerations outside of public health. Quantity of water is, however, a public health issue and appropriate solutions to mitigate risks to drinking water availability are supported.</p> <p>NCC has committed to tracking water losses in the network and NMH supports this work.</p> <p>NMH supports the range of projects that will improve the quality of water including the aeration project at the Maitai dam, pipe renewal, and the additional treatment method of Maitai Dam water provided that the treatment maintained or exceeded compliance with Drinking Water Standards for New Zealand (DWSNZ) and ensured adequacy of supply (either the pre-treatment option or the renewal of the filtration membranes).</p> <p>NCC has indicated that they would investigate options to improve the discolouration of water. Section 69W of Health Act requires water suppliers to take all practicable steps to provide wholesome water. NMH supports any cost effective option which enables provision of wholesome water to the maximum number of consumers.</p> <p>NMH is pleased to see that the LTP includes performance measures that reflect compliance with Part 4 and 5 of the DWSNZ and compliance with water safety plan requirements under the Health Act 1956. However there has been a long standing issue of elevated disinfection by-products in the NCC water supply systems therefore NMH recommends that a new performance measure is included to measure the extent to which the water supply complies with Part 8 (Chemical</p>	<p>NMH supports the following (Council Activities Summaries pg. 13)</p> <ul style="list-style-type: none"> • Maitai Dam aeration project • Renewal of the last two trains of ultra-filtration membranes of the Water Treatment Plant • The replacement programme to replace old asbestos cement and cast iron pipes • The replacement of residential water meters that have now reached the end of lives, and the continuation of the back flow prevention programme • Increasing the capacity of the Atawhai storage reservoir • Water leak reduction programme <p><i>Recommendation:</i> that NCC includes compliance with Part 8 (Chemical Compliance Criteria) to the performance measures for Drinking Water.</p>

19105-1

Draft Plan Topic	Discussion	Recommendation / Support
	<p>Compliance Criteria) of the drinking water standards (Activity Management Summary, pg. 15)</p> <p>There is current uncertainty whether the Health (Fluoridation of Drinking Water) Amendment Bill will pass. If NMH acquires the power to make decisions and give directions about the fluoridation of local government drinking water supplies, NMH is keen to enter into discussions with NCC to discuss the Act's implications for the Nelson region.</p>	
Wastewater	<p>NMH is pleased to see that NCC is continuing to invest in ways to reduce groundwater infiltration and stormwater inflow into the wastewater network as these overflows present a risk to environmental and public health.</p> <p>Large storm events recently have led to Nelson Haven and its beaches being closed due to risk of ill health due to contamination. The exposure to contaminants is a negative consequence of a compromised wastewater system. In addition, local businesses have been adversely affected by the closure of beaches over summer. A reduction of ground water infiltration and stormwater inflow will have positive environmental, social and economic benefits.</p> <p>NMH agrees with the NCC that any untreated discharge into the Nelson Haven should be avoided and it supports the range of projects aimed at improving the rising main between Nelson City and the Nelson Wastewater Treatment Plant.</p> <p>NMH supports future projects that improve the resilience of the network in relation to natural hazards or climate change. In</p>	<p>NMH supports the following matters shown in Council Activities Summaries pg. 24</p> <ul style="list-style-type: none"> • The reduction of inflow and infiltration • Neale Park pump station upgrade • Atawhai rising main inspections and remedial work • Natural hazard security • Compliance with National Policy Statement for Freshwater and other freshwater reforms. <p><i>Recommendation:</i> that NCC obtains a 20 year resource consent for the Nelson Treatment Plant.</p>

19105-1

Draft Plan Topic	Discussion	Recommendation / Support
	<p>particular, NMH supports NCC in its investigations of the long-term viability of the Nelson Treatment Plant in its current location. NCC have predicted that by 2050, there would be a loss of road access to the plant in flooding events, and there is the potential for future coastal water infiltration from below the plant. (Infrastructure Strategy, pg 29). The current consent for the Treatment Plant is until 2024. NMH believes that, given the potential for inundation over the next two decades, a 20 year consent would be more appropriate for the Treatment Plant.</p> <p>NMH supports the Nelson Regional Business Unit to continue to monitor sea level rise at the Bell Island wastewater treatment plant and refine contingency plans as a result.</p>	
Stormwater	<p>NMH is supportive of the measures that NCC is initiating to mitigate flood risks.</p> <p>In addition, NMH agrees with the NCC's approach to mitigating the effects of stormwater on the environment, in particular to improve the quality of the stormwater. The proposed stormwater upgrades will reduce the risk of wastewater overflow events and any associated potential public health effects.</p>	<p>NMH supports the following matters shown in the Council Activities Summaries pg 33</p> <ul style="list-style-type: none"> • Ensure there are sufficient options for stormwater disposal in areas that are experiencing growth • Compliance with National Policy Statement for Freshwater and other freshwater reforms
Fresh water	<p>NMH is pleased to see NCC's ongoing commitment to improving freshwater health in the region through a wide variety of programmes.</p>	<p>NMH supports the following matters shown in the Council Activities Summaries pg 54:</p> <ul style="list-style-type: none"> • Extending the Healthy Streams Programme • More operational funding for the state of the environment monitoring • The new estuarine health

19105-1

Draft Plan Topic	Discussion	Recommendation / Support
		monitoring programme across the region • To make improvements to freshwater through the Whakamahere Whakatu Nelson Plan.
Flood protection	NMH is supportive of the NCC's flood protection works as these will protect people and property from harm during extreme rainfall events.	NMH supports the following matters shown in the Council Activities Summaries pg 42 • Further analysis of Maitai River flood response options • Saxton Creek/Orphanage Stream projects • Flood protection strategies.
Solid Waste	NMH supports the establishment of the Nelson Tasman Regional Landfill Business Unit as this provides for efficiencies and further opportunities to minimise waste in the region. NMH would like to continue to work together on waste management issues including strategies to reduce the amount of waste produced by the health sector.	NMH supports NCC contributing to the achievement of the outcomes in the Nelson Tasman Joint Waste Management and Minimisation Plan 2018 (Council Activities Summaries pg 49)
Environment	NMH is pleased to see NCC's commitment to improving biodiversity, hazard management and climate change.	NMH supports the following matters shown in the Council Activities Summaries pg 55 • Delivery of the Nelson Nature 10-year integrated project that focuses on pest plant and animal control,

19105-1

Draft Plan Topic	Discussion	Recommendation / Support
		<p>significant natural areas, management of coastal margins, development of bio-corridors, threatened species and habitat restoration.</p> <ul style="list-style-type: none"> • A programme of work focusing on climate change • Further work on hazard planning and infrastructure management
Emergency Management	<p>NMH supports the NCC's approach to emergency management and natural hazard resilience. NMH concurs with NCC that when prioritising structure renewals and reliance capital expenditure works that the using lifelines route status is vital; and that new infrastructure and new developments are constructed in a manner that increases resilience.</p> <p>NMH supports a collaborative approach in emergency management training and response.</p> <p>NMH supports the mitigation approaches related to natural hazards and climate change in terms of emergency management responses.</p>	<p>NMH supports the preferred options for natural hazard mitigation as shown on Table Transport 1 and Table WW4 Infrastructure Plan pg 53 and 68</p>
<p>Social</p> <p>Community Facilities</p> <p>Pg 19</p>	<p>NMH wants to emphasise the importance of continual investment in community facilities, these are places which can knit communities together by providing a social meeting place.</p> <p>NMH supports the re-development of the Elma Turner Library and supports the expanded community hub. NMH encourages NCC to work closely with the Youth Council and Accessibility groups to ensure that library developments at Nelson and Stoke</p>	<p>NMH supports the following matters shown in the LTP Consultation document</p> <ul style="list-style-type: none"> • Re-development of Elma Turner Library • Re-development of Stoke Library • Increasing and improving public toilets

Page 14 of 21

19105-1

Draft Plan Topic	Discussion	Recommendation / Support
	<p>are easily accessible and attractive to all age groups. In the design of community hubs, NMH encourages NCC to include breastfeeding facilities where mothers can have a quiet space to feed their infants.</p> <p>NMH supports the NCC to increase and improve the number of public toilets in the region</p>	<p>Recommendation: consideration for the inclusion of breastfeeding facilities is included in any redevelopment of community facilities.</p>
<p><i>Parks and active recreation (pg 69)</i></p>	<p>NMH is pleased to see that NCC will focus on inclusion and accessibility to make recreation opportunities available for all ages and abilities.</p> <p>NMH supports NCC’s development of recreational facilities for cycling and water sports. This support will result in more people participating in these activities which is good for their physical and mental wellbeing. NMH is interested in working closer with NCC on reducing the number of injuries in recreational activities</p> <p>NMH encourages NCC to adopt the Youth Relevant Design approach when constructing the Stoke Youth Park to ensure that it becomes an attractive space that will draw young people to it.</p>	<p>NMH supports the following matters shown in the Council Activities Summaries pg 70</p> <ul style="list-style-type: none"> • Prioritising mountain biking facilities for learner rides and children • The construction of a multi-purpose water sports facility • Improved walking facilities on the Poorman’s Stream Walkway • Construction of the Stoke Youth Park. • Further investment in facilities at Saxton field • Continuation of grants for Brook Waimarama Sanctuary <p><i>Recommendation:</i> that NCC adopt the Youth Relevant Design approach in the design of the Stoke Youth Park</p>

19105-1

Draft Plan Topic	Discussion	Recommendation / Support
Playgrounds	<p>NMH notes that NCC is investing heavily in playground renewals in 2019-2020. As part of the playground renewals, consideration should be given to increasing the number of shade structures or suitable trees so that people are able to get refuge from the sun in the middle of the day. This is especially important for children in playgrounds to ensure that they have additional sun protection.</p> <p>Consideration should also be given to whether playgrounds have a drinking water fountain. Adequate hydration is important especially in the warmer months. NCC has shown its commitment to the introduction of a sugar sweetened beverages policy whereby sugar sweetened beverages are not provided or made available for purchase at council-owned buildings and events. Increasing the number of drinking fountains is another way that NCC can contribute to the health and wellbeing of its citizens by giving people the option of free easily accessible water in public places</p>	<p>NMH supports the NCC to continue investment in playgrounds (Council Activities Summaries pg 77)</p> <p><i>Recommendation:</i> that NCC looks at the amount of shading in playgrounds in the region</p> <p><i>Recommendation:</i> that NCC reviews the number of water fountains available in playgrounds.</p>
Housing	<p>The Community Outcomes document makes mention that NCC would support the development of a range of affordable, healthy and energy-efficient housing in residential areas. However there is no other specific reference to healthy and energy-efficient housing within the other LTP documents. The Council Activities Summaries document (pg 79) only alludes to one mechanism to address housing affordability and that is the provision of more</p>	<p><i>Recommendation:</i> Housing affordability is given a greater profile within the LTP</p>

19105-1

Draft Plan Topic	Discussion	Recommendation / Support
	<p>land for development. NMH considers that the issue of housing affordability should be given a greater profile within the LTP including by incorporating it as a discrete matter and providing reference to the Housing Accord and how its initiatives will give effect to, for example, including provisions which support affordable housing within the Nelson Resource Management Plan.</p> <p>Housing costs in the Nelson area are high compared to many other parts of New Zealand. The Median House Price to Median Household Income Multiples for February 2018⁵ show that the average house sells for 6.4 times the average household income. As a comparison, the average in larger centres is 5.6 for Wellington metro, 4.9 for Dunedin and 5.2 for Christchurch, and in smaller centres, 4.1 for Timaru, 5.7 for Napier and 2.9 for Wanganui. Rental costs in Nelson have risen 10% in the past year⁶.</p> <p>Although housing generally reflects rather than creates socio-economic position, affordability has an influence in terms of:</p> <ul style="list-style-type: none"> • access to quality housing, • where people live and thus social and economic opportunities, • home ownership and the benefits of stability that this 	

⁵ <https://www.interest.co.nz/property/house-price-income-multiples>

⁶ <https://www.stuff.co.nz/business/103154086/rental-prices-soar-in-nelson-region-as-available-rentals-fall>

19105-1

Draft Plan Topic	Discussion	Recommendation / Support
	<p>offers, and</p> <ul style="list-style-type: none"> income available for other needs such as food, heating and health care. <p>Lack of affordable housing has a flow on effect in terms of people being attracted to the region and wishing to stay long term.</p> <p>In terms of healthy homes, it is important that homes are adequately heated which leads to a better quality of life. People who live in warmer homes tend to be healthier, with fewer GP and hospital visits and fewer days away from work due to illness. Cold, damp houses are associated with an increased rate of respiratory and cardiovascular conditions as well as depression and anxiety.^{7,8}</p> <p>It would be of value to have more clarity in the plan around the how NCC will support development of affordable, healthy and energy-efficient housing.</p> <p>Consideration should be given to adopting a rental warrant of fitness scheme where landlords can examine the basic health and safety components of their properties.⁹</p>	<p><i>Recommendation: A voluntary rental WOF programme is adopted by NCC.</i></p>

⁷ Anderson, W., White, V., and Finney, A. 2012. "You just have to get by" Coping with incomes and cold homes. http://www.cse.org.uk/downloads/file/you_just_have_to_get_by.pdf

⁸ 2 World Health Organisation Europe. 2009. Damp and mould: health risks, prevention, and remedial actions. Copenhagen: WHO. http://www.euro.who.int/_data/assets/pdf_file/0003/78636/Damp_Mould_Brochure.pdf

⁹ <https://wellington.govt.nz/services/rates-and-property/property/rental-warrant-of-fitness>

19105-1

Draft Plan Topic	Discussion	Recommendation / Support
Smokefree Environments	<p>The Fresh Air Project, the smoke-free outdoor dining trial has been taking place since December 2017. Preliminary results of the project have shown that 96% of people surveyed in the Nelson/Tasman trial supported smokefree outdoor dining areas. Given the success of this trial, NCC should now consider adopting a broader Smokefree Outdoor Policy where smoking is banned from:</p> <ul style="list-style-type: none"> • Council events • the principal entrances and exits of Council buildings and facilities, carparks and bus stops, • shared public spaces • alfresco dining areas, • beaches • council housing <p>Auckland City Council is in the process of rolling out this type of policy¹⁰. Reducing the prevalence of smoking and de-normalising smoking behaviour is one way the NCC can improve the health and wellbeing of Nelson communities.</p>	<p><i>Recommendation:</i> that NCC extends its smokefree policy to a broader outdoor policy.</p>
Reducing Alcohol-harm	<p>Intoxication with alcohol¹¹ is the main cause of alcohol-related harm in New Zealand society, leading to risk-taking behaviour,</p>	<p><i>Recommendation:</i> that the rules relating to alcohol are reviewed in the Nelson Resource Management Plan</p>

¹⁰ <https://www.aucklandcouncil.govt.nz/plans-projects-policies-reports-bylaws/our-policies/Pages/smokefree-policy.aspx>

¹¹ <https://www.sialliance.health.nz/UserFiles/SouthIslandAlliance/File/PDFs/DHBPositionStatementFINAL08%2003%2012.pdf>

19105-1

Draft Plan Topic	Discussion	Recommendation / Support
	<p>road traffic and other accidents, injuries from falls and drowning, assaults, self-inflicted injury, and acute alcohol poisoning.</p> <p>There are social costs from the use and abuse of alcohol, to drinkers themselves, to others they come into contact with, and to the whole of New Zealand society. Costs range from avoidable morbidity and mortality, hospital presentations, aggression and violence, and crime, to harmful effects on family relationships, friendships and social life, schooling, study and employment opportunities, and financial problems.</p> <p>NMH recommends that in the review of the Nelson Resource Management Plan, that the rules pertaining to the sale of alcohol are reviewed. This review needs to consider the following matters:</p> <ul style="list-style-type: none"> a) Distances between sensitive sites e.g. early childhood centres, schools, alcohol rehabilitation clinics and the location for new outlets. b) Density of existing venues c) Effects of late night licensed premises on the surrounding environment. 	<p><i>Review.</i></p>
<p>Community Events</p>	<p>NMH supports NCC's commitment to increasing funding for community events because these events strengthen the sense of identity and social bonds in a community which is important for wellbeing.</p>	

Appendix A: Summary of Impacts of the Nelson Arterial Traffic Study

Page 20 of 21

19105-1

3.1 SUMMARY OF IMPACTS

Where squares have been left blank there is a neutral or no impact.

- minor negative impact
- moderate negative impact
- major negative impact
- + minor positive impact
- ++ moderate positive impact
- +++ major positive impact

	Option A: Part time Clearways	Option B: Southern Arterial	Option H: SH6 Four Laning	Option I: Walmea/ Rutherford Four Laning	Public Transport/ Travel Demand Management
Community Severance	-	-- (Victory Area)	---	---	+
Safety	-	+ (Walmea/ Tahuna) - (Victory Area)	-	--	+
Economic Impact	- Rates	- Rates + Development	-- Rates - Development	-- Rates	? Rates + Development
Noise	-	--	-	-	+
Physical Activity	- Transport	- Recreation (Victory Area)			++ Transport ++ Recreation
Access to Health Services	-		--	--	+
Air Quality	-	---	-	-	+

+

Submission Summary

Nelson's Long Term Plan 2018-28 Consultation Document - Submission #19108

Mr Derek Shaw

nikau@ts.co.nz

Nelson

548 7537

548 7537

Speaker? True

Department	Subject	Opinion	Summary
NCC - Infrastructure Services	18. Parks and active recreation		See attached.

Printed: 24/04/2018 11:46

19108-1

Bev McShea

From: Submissions
Sent: Monday, 23 April 2018 3:16 p.m.
To: Administration
Subject: FW: Submission on Draft LTP
Attachments: TOSAC Trust - Submission to Draft NCC LTP 2018-28 (final).docx
Categories: Bev

From: Derek Shaw
Sent: Monday, April 23, 2018 3:15:34 AM (UTC+00:00) Monrovia, Reykjavik
To: Submissions
Subject: Submission on Draft LTP

Please find the attached submission from The Top of the South of the South Athletics Charitable Trust.

We wish to speak at the Council hearing. No preference re time of day.

Derek Shaw

Chairperson

Contacts: 03 5487537, 027 5487537 and nikau@ts.co.nz

19108-1

Top of the South Athletics Charitable Trust Inc

PO Box 602

Nelson

23 April 2018

SUBMISSION ON DRAFT NCC LONG TERM PLAN**Introduction**

The Top of the South Athletics Charitable Trust was established in 2007 to support the provision of athletics facilities for those residing in the top of the South Island. We have been involved in the fundraising to cover the athletics organisation's contributions towards the capital costs of all-weather track facilities and pavilion at Saxton Oval and last year the provision of the hammer and second discus cage. We have also provided the equipment centre and some of the equipment needed to undertake athletics Meets. We also pay the annual Council user charges for the track and associated facilities and have a Track Management Committee that helps look after the track and liaises with the Council staff responsible for managing the facilities.

Earlier Consultation with Sports Organisations on LTP

We attended the meeting organised by Council on 24 July 2017 at which sports organisations were invited to outline their future opportunities and needs. We followed this up with a 6 page submission on 14 September 2017 (a copy is attached). Our summary and recommendations were:

"A number of deficiencies have become apparent at the athletics facilities at Saxton Oval particularly with respect to the hosting of large track and field events. With the pending replacement of the all-weather track surface there is a good opportunity to address these short comings and to also complete the facilities needed to provide the option of hosting further large athletics meets. We are very concerned at the current state of the all-weather track and how quickly it is deteriorating and the resulting health and safety, and reputational risks and believe it is highly likely to need replacing earlier than it is currently programmed for in 2021 – 2022 financial year.

We recommend that:

- Council in conjunction with the Trust obtain advice on the expected remaining life of the existing track surface in order to determine when it will need replacement and to programme the track replacement in the appropriate year in the 2018 -2021 Long Term Plan.
- When the track is replaced that it be rotated through 180 degrees to position the home straight adjacent to the eastern embankment and that concurrently a

19108-1

grandstand be planned and constructed to provide a minimum of 600 covered seats, a new control room and additional storage capacity.

- That when the track is replaced that it be officially certified and regularly cleaned.
- That the Council work with the Trust to complete the pole vault facility within the next 12 months.”

Current Situation

Our greatest and most immediate concern is the current deteriorating state of the track and the effects this is beginning to have on athletes who use the track and will have on the track’s reputation, and in turn, the ability to successfully host major athletics Meets in the next four years, hence our first recommendation above.

We are grateful that Council has very recently received a condition report on the track. This report indicates that the top surface of the track has hardened and such hardening causes injuries, particularly for school children who have immature skeletal systems and tend to have less sophisticated footwear. It recommends prompt resurfacing. If done soon, resurfacing will prevent deterioration progressing to the point where the asphalt base also needs to be repaired, which would add to the costs and take longer.

The report indicates that if the existing track is allowed to deteriorate further a thicker resurfacing layer will be needed and there is a risk that it deteriorates to the point where it has to be removed and a new track laid. This could take up to 10 weeks, depending on whether the underlying asphalt is damaged during the removal of the old material, compared with about 4 weeks for resurfacing with say an 8mm layer. Testing of a sample of the existing track material would determine the thickness of the overlay required. Typically an 8mm overlay will ensure compliance with IAAF shock absorption rules and restore the performance of the track similar to or better than a new track. This has occurred recently at the resurfaced track in Palmerston North and in Perth in 2016, where several records were broken. Without the safeguard of adequate shock absorption, we understand there is a risk that Council may be breaching requirements established in recent Health and Safety legislation.

The report recommends the resurfacing work be done in January 2019, which would mean placing an order in October to enable the manufacturing and shipping of the material to the track for onsite work to commence in January with completion by mid February. The estimate of the cost of an 8mm resurfacing is \$865,000 plus GST and apparently a full replacement has been estimated at over \$1m.

Next steps

There are currently several different suppliers of all-weather tracks in New Zealand. Several have been replaced in recent months eg in Inglewood, Wellington and Tauranga and a brand new track is nearing completion in Christchurch. There are now a range of

19108-1

experiences in New Zealand with these different surfaces and how well they have been performing. Consequently, there are a variety of opinions as to which track surfaces are best for training on and for achieving high performances such as records and personal best times for sprinters and middle and long distance runners.

We urge Council to at least investigate the track surface options available from the two major suppliers in New Zealand (Mondo and Rekortan), experiences with these surfaces, along with their costs, time required for ordering through to installation, expected life and guarantees etc. We are happy to assist in any way we can.

Nelson is scheduled to host the South Island Secondary Schools Track and Field Championships in March 2019. We have hosted these championships on two previous occasions and can typically expect 650-850 athletes plus managers, teachers, officials and parents here for the three days, making these championships along with the South Island Colgate Games the largest events that we currently hold in Nelson.

Whichever track surface is selected, it is vital that it is in place by the end of February 2019 to enable hosting of the South Island Secondary School Track and Field Championships in March, tentatively scheduled for 23-24 March 2019.

In our September submissions we recommended that when the track is replaced (or re-layed) that it also be certified. We understand that this was not undertaken when the track was installed, to cut costs. Organisations that maintain national and international records for track events generally require that tracks are certified when they consider applications for new records. Athletes who break such records on the Saxton track risk their applications not being accepted if the track remains uncertified.

In our September submission we also recommended that when the track is replaced that it be rotated through 180 degrees to position the home straight adjacent to the eastern embankment. The Council staff response to our September submissions indicated that Council "continues to propose funding of the track resurface for year 5 of the draft Plan. Investigation as to whether you wish to consider a track rotation can be made at this time."

If our recommendation to resurface or replace the track by the end of February 2019 is adopted then we are still keen to see the track re-orientated and would like the opportunity for this to be discussed with the appropriate staff. We accept that concurrently designing and constructing a 600 covered seat grandstand, new control room and additional storage capacity by the end of February 2019 is not realistic but would like to try and ensure that this is an option for serious consideration within the next few years after the track is re-orientated. Otherwise it is likely to be 10-15 years (depending on the life of the resurfaced or replacement track) before this can be considered and we are, in turn, able to consider hosting the larger championships events mentioned in our September submissions.

19108-1

As re-orientation of the track would establish a new finish line (near the existing 200 m start), there is the need for services to support photo timing at this site. This would require provision of power to the outside and inside of the track at the finish line, the latter by way of a new underground conduit close to the finish line. Short lengths of fence (similar to the perimeter fence) should also be constructed, to keep athletes, officials, and spectators away from the line of sight of the photo finish camera.

Draft LTP

In the Council Activities Summaries report on page 77 we note that with respect to the athletics track that the following funding has been allocated: \$21,349 in 20/21 and \$980,969 in 21/22.

Conclusions and Recommendations

Now that Council has received a condition report on the track that indicates it is rapidly deteriorating, there is an urgent need to investigate the options for new surfaces, make a decision and schedule the installation to be completed before the end of February 2019.

It is very desirable to know as soon as possible that the resurfacing is happening and that it is scheduled to be completed by the end of February, so that hosting of South Island Secondary Schools Track and Field Championships can be confirmed and planning can get underway. An early decision would also help with the scheduling of the other meets for next summer to take account of the disruption to the normal schedule.

We are still keen to see the track re-orientated 180 degrees when it is resurfaced or replaced, and for the concurrent installation of the associated photo-finish infrastructure, which would in the interim enable at least the option of some sprints events to occur on the present back straight. This could be the first stage towards the completion and upgrade of the facilities at the track which could then enable the hosting of larger national and international events.

However, it would be desirable before commencing the re-orientation of the track if there was a commitment to a (slightly longer-term) plan to provide the associated infrastructure (grandstand including storage facility) within the next few years. Given the location of the Pavilion, the best site for a grandstand would be alongside the existing back straight, but if such facility is unlikely to eventuate during say the next 6 years (ie the first half of the lifetime of the next track surface), then keeping the current orientation would be preferable and considering the re-orientation of the track nearer the end of the life of the resurfaced or replaced track.

We recommend that Council:

Moves the funds currently allocated for the athletics track in 2020/21 and 2021/22 to 2018/19 to enable the urgent resurfacing or replacement of the track;

19108-1

Immediately begins investigating the track resurfacing and full replacement options with the intention of having the selected solution completed before the end of February 2019;

Obtains certification for the re-surfaced or replaced track; and

Considers re-orientation of the track and the provision of photo-finish infrastructure when the track is re-surfaced or replaced next year.

Please note that the contribution from athletics to the track replacement has already been made through the annual charges that have been paid since the track opened in 2009; these have included an allowance for the depreciation and replacement of the track.

We would like to take the opportunity to speak to our submission. Please contact Trust Chairperson, Derek Shaw, ph 03 5487537 or 027 5487537.

ATTACHMENTS

A. Comments from two local coaches – Dennis Kale and Greg Lautenslager

27.03.2018

To the Top of the South Athletics Trust

As a sprint coach based at the Saxton Oval athletics track in Nelson over the past 9 years I would like to express my disappointment at the current state of the track. It is fantastic that we have an all-weather track facility however the condition of the track now is posing constant injury issues to my athletes to the point where we are becoming increasingly hesitant to use it as a training facility and will re-evaluate the use of the track next summer.

My sprint squad has several athletes who have contributed greatly to the successes Tasman athletics have enjoyed at National and South Island events over the past few years and some have represented Tasman and NZ at International meets. I'd like to think our concerns were given fair consideration.

The primary concern is the how hard and brittle the track has become. This seems to be a common occurrence with Mondo tracks in environments with long hours of intense sunshine, eg Tauranga. It seems that once the track begins to deteriorate the process happens rapidly.

I encourage the Trust/Council to consider relaying a Rekortan track, supplied in NZ by Polytan Ltd. These tracks have been successfully used in many other centres around NZ. Of note the Hastings track which was laid in 2008 and is cited in similar environmental conditions re sunshine hours and intensity, is still in good condition.

I have had a huge increase in the number of squad injuries over the past two seasons and many diagnoses have attributed the various injuries to running on the hard track.

19108-1

I note the South Island Sec School Champs have been scheduled for Nelson in March 2019 and I seriously doubt that after another summer of use and deterioration the track will be in a satisfactory state to host this meet.

I would strongly encourage the Trust to urgently pursue negotiations with the Council to bring forward the scheduled re-surfacing of the track. Nelson will soon start to miss out on hosting events if the track is left to deteriorate further.

Dennis Kale
Sprint Coach, Nelson

20.4.2018

I believe the deterioration of the Saxton Field Athletics Track is causing slower race times, poor performances in workouts, and injuries. The track is very hard, like concrete, and brittle. It has no cushion, no bounce, making it hard to run fast or recover from the pounding.

Many of my athletes are coming down with calf and shin problems - including my top male and female distance runners. The female, in particular, has suffered stress reaction to her shins and foot problems. This ruined her season and put her running career in jeopardy. I have managed finally getting her right by having her avoid the track. We have had relatively few such injuries in prior years.

Next year we will be forced to train less on the track, which will hamper my attempt at getting my distance runners fit for track season. I am not sure the track will even survive another season, and we will have to confine all our workouts to the grass.

I have heard other runners and sprinters are also suffering more injuries and worry what pounding on the hard track is doing to the green bones of our children athletes.

I hope the councils act quickly on track resurfacing.

Greg Lautenslager
Coach/Director, National Academy of Distance Running

B. Letter from the President of Athletics Tasman**ATHLETICS TASMAN**

April 23, 2018

Re: Resurfacing of the Athletic Track at Saxton

To Whom it May Concern

19108-1

I can not stress enough how much our Tasman track and field athletes have benefited from having a rubber track to train and race on, this does not only include Nelson but the whole Top Of the South region and as far afield as Westport, Greymouth and Blenheim where athletes have travelled to Nelson to compete or train.

This has enabled our athletes from our small centre to be up at national level with the best in the country and on many occasions bringing the medals home and putting Nelson in the spotlight.

The rubber track has helped fuel interest in our sport and major events like The South Is. Masters Games use our track and bring revenue to Nelson.

I urge that the Council consider strongly the points brought up by the Top of the South Athletics Charitable Trust and our track management committee to the urgency of resurfacing as soon as possible and thus save ratepayers from increased costs later and not jeopardising losing our track for any longer than is necessary and enabling our athletes to continue to have a rubber track to train on.

Sincerely,

Debra Lautenslager
Athletics Tasman President
c/- 33 Panorama Dr
Nelson, 7011
dlautenslager@hotmail.com, ph 0221041162

C. Copy of Submissions on Athletics Facilities at Saxton Field – September 2017

Top of the South Athletics Charitable Trust

PO Box 602,
Nelson

Gabrielle Thorpe
Policy Adviser
Nelson City Council

14 September 2017

Athletics Facilities at Saxton Field

Summary and recommendations

A number of deficiencies have become apparent at the athletics facilities at Saxton Oval particularly with respect to the hosting of large track and field events. With the pending replacement of the all-weather track surface there is a good opportunity to address these short comings and to also

19108-1

complete the facilities needed to provide the option of hosting further large athletics meets. We are very concerned at the current state of the all-weather track and how quickly it is deteriorating and the resulting health and safety, and reputational risks and believe it is highly likely to need replacing earlier than it is currently programmed for in 2021 – 2022 financial year.

We recommend that:

- Council in conjunction with the Trust obtain advice on the expected remaining life of the existing track surface in order to determine when it will need replacement and to programme the track replacement in the appropriate year in the 2018 -2021 Long Term Plan.
- When the track is replaced that it be rotated through 180 degrees to position the home straight adjacent to the eastern embankment and that concurrently a grandstand be planned and constructed to provide a minimum of 600 covered seats, a new control room and additional storage capacity.
- That when the track is replaced that it be officially certified and regularly cleaned.
- That the Council work with the Trust to complete the pole vault facility within the next 12 months.

Update

Further to our verbal report at the meeting held with sports organisations on 27 July 2017 at Sport Tasman when I mentioned that there was an opportunity for Nelson to host the NZ Secondary Schools Track & Field and Road Championships in December 2018, key local stakeholders have had further discussions and decided to indicate to NZ Secondary Schools Athletics Association that we are not keen to host these champs next year. The key reasons include the lack of covered seating, no certainty of having the pole vault facility in place by then and the state of the current aging track surface. This particular event is held in the South Island every third year and could potentially be again considered for December 2021.

The Trust and other athletics interests have decided that we should complete the athletics facilities at Saxton Oval and have the replacement all-weather surface programmed to be in place before agreeing to host or bid for such large national events.

Experiences with existing athletics facilities

Although the facilities have been used to host some large events such as the South Island Colgate Games (involving 700-800 6 to 14 year olds on two occasions), the South Island Secondary School Track and Field Championships (650 13 to 18 year olds on two occasions) and most recently the New Zealand Masters Athletics Track and Field Championships (320 30 to 90 year olds) in March this year, the facilities have been stretched with these bigger events and some shortcomings have become increasingly apparent.

Issues with the existing pavilion include:

- Limited seating for athletes, coaches, managers, family and other supporters and spectators;
- The majority of existing seats do not offer a very good view of the track when jump events are underway;

19108-1

- Very little covered seating to provide protection from Nelson sunshine until well into the afternoon or shelter from rain.
- The 100m and 110m hurdles starts are not clearly visible from the control room.

In addition, with the current layout of the two jumps runways and pits between the track and existing seating, this narrow corridor gets very congested during large meets with spectators lining the fence and others moving between them and the seating. When jump events are underway it is very difficult for most seated spectators to see the finishing straight and finish line on the track. At other athletics facilities where jumps runways and pits are located adjacent to the finishing straight there is an elevated covered grandstand which enables spectators to see over the jumps events to the track and to the throwing events inside the track.

Our recommended solution to present shortcomings

We recommend that the track be realigned by rotating it through 180 degrees in order to locate the front or home straight adjacent to the eastern embankment, where the back straight is currently located. In conjunction with this we recommend that a covered grandstand with a minimum of 600 seats be constructed utilising the slope of the existing eastern embankment. A control room would be needed at or near the northern end of the grandstand opposite the new finish line with a more elevated view of the whole track. A conduit under the track would also be needed near the new control room, to provide electrical and data services to the adjacent infield.

The obvious time to undertake such a realignment of the track is when the current all-weather surface is replaced. The current NCC Long Term Plan 2015 – 2018 has the track replacement scheduled during the 21/22 financial year. This would also be an appropriate time-frame for a covered grandstand to be constructed on the eastern embankment because a new control room on the eastern side would be needed once the track is replaced and rotated.

We envisage a covered grandstand that is similar to that built at Aorangi Park in Timaru, but with a modified position of the control room. See the appended sketch and article. We understand that it has approximately 600 seats and cost \$400k in 2007. We have sought the services of a local architect to look at a possible preliminary concept for Nelson which we will forward on when we receive it.

This solution would alleviate the issue of the high-use jumps runways and pits being located between the major spectator viewing area and the track front straight. It would also spread spectators more evenly around the track perimeter and thus avoid or reduce the congestion that occurs currently between the seating area, the jumps pits and the track.

All venues in New Zealand that host national track and field meets have permanent covered seating available for athletes, coaches, officials and spectators. Given our high sunshine hours and occasional rain it is now recognised that the provision of shelter from the sun and rain and to a lesser extent wind is important. Other venues that host large meets such as NZ Secondary Schools T&F and SI Colgate Games have at least 600 covered seats available in a permanent grandstand, including similar sized regional centres such as Timaru. The annual Inter Provincials championships for 12/13 and 14/15 year olds now require 450 covered seats at the host track.

Given the unique design of the award-winning Saxton Pavilion and the limited space available it is difficult to imagine how such covered seating could be retrofitted between the pavilion and the

19108-1

fence adjacent to the jumps runways and pits. We believe that our recommendation of constructing a permanent covered grandstand and control room on the eastern side of the track utilising the embankment between the track perimeter and the archery facility is the only realistic option.

The grandstand could also incorporate additional storage space as the current equipment shed is nearing its capacity. Completion of the pole vault facility will require storage of the large bulky pads. Options include an extension to the equipment shed, storage under an adjacent grandstand on the eastern embankment or a separate custom-built cover similar to that used for the high jump pads.

Completion of Pole Vault Facility at Saxton Oval

At the time the all-weather track was constructed a double-ended pole vault runway was installed on the eastern side of the track. However, in order to complete this facility there needs to be two uprights, bars, a set of special landing pads and somewhere to store this equipment, particularly the bulky pads. In addition we would also need a variety of poles for athletes to use. Quotes obtained last year from suppliers of pole vault equipment that complies with IAAF requirements indicates that this will cost in the order of \$50k.

In order to consider hosting large athletics events such as the NZSS T&F champs we need a pole vault facility. We also expect local athletes would make use of such a facility. We have a pole vault coach in the region who has indicated that there are secondary school athletes and older athletes interested in learning how to pole vault. This interest has increased following the international success of Eliza McCartney (bronze at 2016 Olympics) and the rapidly improving Olivia McTaggart, who is breaking McCartney's NZ age group records. We have received indications that these two and their coach would be keen to come down when the facility is completed to help demonstrate and promote pole vaulting.

Completion of the pole vault facility is our top priority and we are keen for the Councils to contribute on the same basis as they did for the hammer/second discus cage that was completed in March this year in time for use for the NZ Masters Athletics Track and Field Championships. We are currently investigating potential funding sources in order to contribute our 20% towards the cost of this facility and are keen for this facility to be in place by October 2018.

Current track surface

When track was completed early in 2009 it was expected to last 10-12 years, which is our understanding of the usual range for all-weather track surfaces. This is recognised with the scheduled replacement in successive Council Long Term Plans (LTP). In the current LTP it is due for replacement in the 2021 – 2022 financial year. The Trust, on behalf of athletics organisations, has been contributing towards the track replacement cost in its annual charges that also cover our contribution towards various maintenance costs and use of associated facilities in the pavilion and the equipment shed (the latter built and paid for by athletics organisations).

We recently noticed in the agenda for the Saxton Field Committee meeting held on 30 August that the track replacement is now proposed to be moved out a year to the 2022 – 2023 financial year. We are very concerned by this suggestion because the track is already showing considerable deterioration and aging. We believe this is occurring through a combination of factors such as:

- Effects of UV radiation

19108-1

- Regular use
- Regular abuse such as non-complying spikes, football players with sprigs on their boots crossing the track when and where carpet is not in place and warming up around it, spectators standing on the track during football games (especially when wearing inappropriate footwear) and dropping liquids and other material on the track.
- Regular presence of duck poo and fine grit/sand
- Vehicle crossings without use of protective cover
- Presence of moulds and lack of regular cleaning

Athletes are already commenting on how hard the track is becoming and in some cases complaining of sore shins and other foot and leg issues/injuries. We are aware that other tracks around New Zealand have deteriorated at an accelerated rate as they have aged and have become very hard and brittle eg Tauranga, Inglewood and Wellington. This has resulted in some athletes sustaining injuries after using them while others have avoided using them because of the higher risk of injuries. This has been not only a serious health and safety issue but also a reputational concern for athletics in the Tasman Centre; with the viability and success of some major track and field meets being compromised because of track athletes avoiding competition on such deteriorated tracks.

We take these issues very seriously and urge Council to obtain urgent advice on the expected remaining life of the track surface in order to be able to programme the replacement of the track in the appropriate year in the forthcoming 2018 – 2021 Long Term Plan. We suspect it may need to be bought forward from the currently scheduled 2021 – 2022 financial year.

When the track is relayed we urge that it be formally certified this time. We understand that this was not undertaken when originally laid as a cost saving measure. Organisations that maintain national records for events on tracks generally require that the tracks are certified as part of the consideration of applications for new national records. Athletes who break national records on the track may find their applications are not accepted if the track is not certified. We also recommend that the new surface receive regular cleaning to help prolong its life.

Potential future events we could host

In order to consider bidding for some major athletics meets and/or responding positively to hosting requests, we believe that we need to complete the existing facilities at the Saxton Oval. The recently completed hammer/second discus cage has enabled us to host some additional meets. Completion of the pole vault facility would enable other meets to be hosted as well as enable use by interested local athletes.

It is becoming increasingly important to have covered seating available at major meets and is being required in an increasing number of situations. The provision of covered seating at the athletics oval should be accepted as essential if Nelson-Tasman is to be regarded as a serious contender to host major athletics meets. Hosting major athletics meets has major economic and social benefits for the region as they usually take place over multiple days. Given our geographic position in the centre of New Zealand, the frequency of flights and the competition on popular routes, and our popularity as a holiday destination (for extended stays), we can expect to have more than our share of South Island and New Zealand events as well as occasional international events if we have all the required facilities.

19108-1

We could expect to continue hosting the following events (*) and also potentially the following additional events (*):

- South Island Colgate Games (*) (700-800 athletes plus managers, coaches, officials and parents – 3 days)
- South Island Secondary Schools T&F Champs (*) (750-850 athletes plus managers, coaches, teachers, officials and parents – 3 days)
- South Island Masters Track and Field Champs (*) (80-100 athletes plus officials and supporters – 3 days)
- South Island Masters Games athletics (*) (80-100 athletes plus officials and supporters – 1 day, most also compete in additional events over 5 days)
- NZ Secondary Schools T&F Champs (*) (1300-1400 athletes plus up to 500-600 managers, coaches, teachers, officials and parents/supporters – 4 days)
- NZ Interprovincials T&F Champs (*) – 12/13, 14/15 year olds (400-500 athletes plus managers, coaches, officials and parents/supporters – 2 days)
- NZ Masters Athletics T&F Champs (*) (320 -350 athletes plus 70 officials and up to 150 supporters – 3 days)
- Athletics NZ T&F champs (*) (450-550 elite athletes plus 300 managers, coaches and officials – 3 days)
- Athletics NZ 3000m (*) and 10,000m track championships (the latter likely to be combined with NZ Masters Athletics in future (50 - 200 plus managers, officials and supporters – 1 day)
- Oceania Masters T&F Champs (*) (450-500 athletes plus officials and supporters – 8 days)

Please note that for such major events the athletes are usually accompanied by managers, coaches and other supporters such as partners and other family members. The respective numbers of these will vary according to the event and age of athletes, for instance children's events general have a much higher proportion of parents, grandparents and other children attending than for those events which predominantly involve U18, U20 and senior aged athletes.

Conclusion

With the pending replacement of the all-weather surface on the athletics track, it is the appropriate time to review the current facilities at the athletics oval. We have undertaken such a review and have concluded that if Nelson Tasman is to have the option of considering the hosting further large South Island, New Zealand and also Oceania or other International track and field meets there is a need to complete the existing facilities, particularly the pole vault facility and the provision of a significant number of covered seats for athletes, coaches, managers, officials, supporters and other spectators.

We understand that the Council shares our desire to have sports facilities at Saxton Field and elsewhere up to a standard that makes it possible for major events to be hosted here. This is to not only make better use of the investment in these facilities but to also provide significant economic and social benefits for the people of the region through increasing the visitor numbers and their length of stay and the resulting spend while participating and attending such events and enjoying the many other attractions on offer in our region.

19108-1

We are keen to work with Council to complete these facilities and look forward to further discussions on how this can be achieved.

The current rapidly deteriorating state of the track surface and the impacts that this is likely to have on athletes and on the reputation of our facilities, concerns us greatly. Judging by what has occurred with aging tracks elsewhere in New Zealand we expect it to deteriorate at a faster rate from now on.

We therefore urge that advice be obtained on the remaining expected life of the current track surface. We would welcome the opportunity to meet relevant staff, and perhaps some councillors, on site as soon as possible to see first-hand the state of the track surface.

Yours sincerely

Derek Shaw

Chairperson

Submission Summary

Nelson's Long Term Plan 2018-28 Consultation Document - Submission #19129

Mr Gaire Thompson
Thompson Property Group

caroline@tpg1.co.nz

Nelson

545 1092

545 1092

Speaker? True

Department	Subject	Opinion	Summary
NCC - Community Services	17. Community services		See attached.
NCC - Corporate Services	11. Rates, debt and affordability		See attached.
NCC - Community Services	19. Other feedback		See attached.
NCC - Infrastructure Services	12. Transport		See attached.
NCC - Community Services	03. Council priority - CBD development		See attached.
NCC - Infrastructure Services	13. Water supply		See attached.
NCC - Infrastructure Services	15. Stormwater and Flood protection		See attached.
NCC - Community Services	05. Library re-development		See attached.
NCC - Community Services	17. Community services		See attached.
NCC - Infrastructure Services	18. Parks and active recreation		See attached.

Printed: 24/04/2018 02:24

NCC - Corporate Services	04. Council priority - Lifting Council performance		See attached.
NCC - Environmental Management	02. Council priority - Environment		See attached.
NCC - Community Services	07. Community events		See attached.
NCC - Community Services	08. Natureland		See attached.
NCC - Corporate Services	09. Brook Waimarama Sanctuary		See attached.

Printed: 24/04/2018 02:24

Submission 10 Year Plan

Nelson

Iwi Involvement

I object to special rights and privileges being given to IWI who haven't been elected at the tri-annual Council elections as one of the 12 councillors by all the citizens. Settlement of IWI grievances is an issue for Government to sort and post settlement should have the same standing as any other person or business.

I am totally opposed to IWI providing "input to Councils Governance and decision making process" and being part of the Planning and Regulatory Committee, Nelson Regional Sewage unit or any other Council committee or Company or influencing any major Council decisions.

This would also come at a considerable cost I believe.

Financial Strategy

I am concerned that it is considered OK to increase our debt by \$12m, over 11% in the coming year alone, despite an average 3.2% rates rise projected to increase over the next 5 years to \$174m an increase of 61%.

CCTV

I suggest that the Police make a significant contribution to the projected replacement cost of \$109,680.00.

Most important is the statement "that it is not financially sustainable for Council to provide all the services and activities wanted by the community at the same time"

Airport

I question the way the return on shareholder funds for the airport is based only opening funds as post the \$32m terminal development I believe it will be significantly different.

Buses

I haven't been able to find how much per seat the buses have cost the ratepayer, yet it is proposed to spend more on an interim ticketing system good for only 5 years.

Collingwood Street Bridge

I hope that the proposed \$350,000.00 to paint it is just a guess and quotes will be significantly better.

One Hours Free Parking

This has been good for the inner city and I am pleased to see it continuing.

19129-1

Roads

I would question the proposed expenditure on many roading projects particularly the Nayland Road/Quarantine Road intersection upgrades at \$5,562,412.00 over 7 years, to do what?

Plus an enormous amount on cycleways and shared pathways.

Water

Have experienced a recent hard to locate leak, better detection services are needed- Malcolm was the expert. A great deal could be saved with better detection.

Matai Dam Water

I would have thought that once in the river it would aerate itself.

Waimea Dam

As per my original submission Nelson doesn't need to and shouldn't be giving \$5m to this doubtful project as it is apparently only delaying an expenditure of 3.5m which we will have to do anyway to separate off the Nelson South water.

Water Pressure

I support the proposal to reduce the higher water pressure areas in the Network – this should reduce many leaks.

Storm Water

It is not fair in that user pays society for a number of properties in the rural part of Wakapuaka fronting State Highway 6 be charged storm water. The storm water from the front of these properties drains into the ditches which they have to maintain, then flows through Transit drains to the creek then out to sea. This storm water charge should be removed from these properties that don't benefit from Council drains.

Betts Carpark

I am most surprised to see the Council paying \$1,137,547.00 over 4 years from 2021 towards this when they sold it last year- surely this should have been put onto the developers or were we giving them the site?

Flood Protection

The flood models prepared by Tonkin and Taylor in 2016/2017 were totally unrealistic and excessive in many areas and any decisions should reflect this.

Public Library

I oppose the proposed \$14.9 million for the redevelopment of the Elma Turner Library as a totally unnecessary expense.

Bishops Suter Art Gallery

How does it cost \$550,000.00 17/18 and \$656,000.00 18/19 to update financial management?

Refinery Gallery

Why spend \$417,118.00 on this sparsely used building to earthquake strengthen when everyone has been happy to use the Nelson Airport terminal despite it being earthquake prone.

Trafalgar Park/Saxton Field Cricket Oval

Why do we have to repeatedly spend around \$350,000.00 to \$450,000.00 every few years redoing these surfaces.

Civic House

I would question the need to spend \$5.7m on renovations to Council offices. Many homes and businesses would also like to update their properties.

Staffing

An extra \$1.2 m in this financial year I hope that the ratepayers are getting value for their money because from our experiences the Council time spent on somethings should have been a fraction of what it was and then it was on charged to us.

Information Technology

We certainly hope that at \$3.4m the Council is getting the best advice and equipment.

Differential Rating

It is heartening to see that the CBD differential has been reduced by 0.5% but this does not go nearly far enough as the commercial rate payers have been over rated for years, having larger yearly increases than the residential rate payers

The City Centre/Farmers site still has proposed rates of \$110,273.51 per annum .

C.B.D rates are still 2.43368 times the residential rate and fund 28.82% of the total rates collected.

Uniform Annual Charge

I support the reduction in this but believe it should be reduced further as it is not accurately assessed and penalises small businesses.

19129-1

Cycleways

\$1.9m for cross town and Nile Street cycle ways, a lot for usage.

Data Collection and Analysis

\$6.1m over 10 years appears expensive.

Clean Air/Green Waste

More log burners should be allowed as it recycles tree trimmings and provides healthy affordable heat that is available when electricity is not. Good for health. Encourage home composting.

Interest Management

I question the use of swaps as a form of interest management as would have cost Council considerably over recent years.

Lewis Stanton

How much has this cost and is this continuing to cost the ratepayers?

Christmas Decorations

Are there plans to get long lasting attractive bright lights for Christmas decorations to replace the faded tea towels used last year?

Support Cost

The ratepayer funding to support the following need to be scrutinised regularly and justified

- Natureland
- Bishop Suter Art Gallery
- Brook Waimarama Sanctuary
- School of Music
- Theatre Royal
- Nelson Regional Development Agency -suggest more publicity of what they have achieved to justify continual funding
- Uniquely Nelson

I wish to be contacted to make a verbal submission

Submitted by,

Gaire Thompson

PO Box 667

Nelson Ph 5451092 Cell 027 228 7219

Submission Summary

Nelson's Long Term Plan 2018-28 Consultation Document - Submission #18089

Mr Andrew Huffam

andrewhuffam@gmail.com

248A Songer Street Stoke
Nelson 7011

Speaker? False

Department	Subject	Opinion	Summary
NCC - Community Services	06. Spotlight on Stoke		<p>I would like to put forward my thoughts on a purposed youth park.</p> <p>I feel that \$618000 could be better spent else where as this is an excessive amount of money to spent on something that will be only popular for the first couple of months and will only target a small amount of youth and in the end just get tagged and cost more money on up keep on repairing what is broken.</p> <p>I also feel it would be left to the community to monitor what goes on and report any trouble to police which is something the community shouldn't have to be responsible for. With that said i do not support a Stoke youth park.</p> <p>If this should get past investigation,consultation stages and get the go ahead then my thoughts on location are that it should be out of the way like the Nelson skatepark and Richmond skatepark. City Bylaws prohibit any skateboarding or similar device in and around central areas Nelson City Council Parking and Vehicle Control Bylaw 2011 (Section 12 and 12.1 Skate Boarding, Roller Skates,Inline Skates and Wheeled Recreational Device)</p> <p>Best Locations: Ngawhatu Rec Ground (Plenty of space and would be an addition to Octopus gardens play ground)</p> <p>Saxton Field (This would be ideal because it gives familys with kids not playing sport somewhere to go while waiting for the games to</p>

Printed: 03/04/2018 11:10

			finish) Aldinga Reserve
NCC - Infrastructure Services	12. Transport		See attached. I would like to request that the widening of Songer Street be added to the Long term plan 2018-2028. Songer Street between the Main Road Stoke intersection and Titoki Street gets very congested many nights of the week and in weekends is down to one lane as vehicles park both sides of the road making in dangerous to enter and exit the housing side of the road with not being able to see out of driveways and kids running across the road to play there weekly sport. I would expect to see the congestion in the street get worse when the New Stoke Centre is complete and events held. For some reason the street is narrowed in this section between Main Road Stoke and Titoki Street compared to the rest of Songer street. I have a couple of ideas that would very in cost and length of time to put in place but would be very effective. 1- Remove all parking on the housing side of Songer Street in this section that is narrow which can quickly and easily be achieved by yellow lines and signs being put in place . 2- Widening the road by removing the garden from the Greenmeadows side of the road thus letting the footpath and car parks to be moved in to allow a wider lanes to match the rest of Songer street.

Printed: 03/04/2018 11:10



Submission ID	Full Name	Designation	Organisation	Summary	Staff	Staff Comment	Staff Recommendation
18089	Mr Andrew Huffam			<p>I would like to put forward my thoughts on a proposed youth park.</p> <p>I feel that \$618000 could be better spent else where as this is an excessive amount of money to spent on something that will be only popular for the first couple of months and will only target a small amount of youth and in the end just get tagged and cost more money on up keep on repairing what is broken.</p> <p>I also feel it would be left to the community to monitor what goes on and report any trouble to police which is something the community shouldn't have to be responsible for. With that said i do not support a Stoke youth park.</p> <p>If this should get past investigation,consultation stages and get the go ahead then my thoughts on location are that it should be out of the way like the Nelson skatepark and Richmond skatepark. City Bylaws prohibit any skateboarding or similar device in and around central areas Nelson City Council Parking and Vehicle Control Bylaw 2011 (Section 12 and 12.1 Skate Boarding, Roller Skates,Inline Skates and Wheeled Recreational Device)</p> <p>Best Locations: Ngawhatu Rec Ground (Plenty of space and would be an addition to Octopus gardens play ground)</p> <p>Saxton Field (This would be ideal because it gives familys with kids not playing sport somewhere to go while waiting for the games to finish)</p> <p>Aldinga Reserve</p>	NELSON-CITY\paulth	Whilst a location is yet to be determined for the Youth Park, Saxton Field is unlikely to be an option because there is a need for a more central location in Stoke. Saxton Field is some 2km away.	n/a
18128	Ms Rachel Knowles	Secretary	Nelson Baseball	Please see attached.	NELSON-CITY\andrp	Further information is required to justify long term baseball facilities at Saxton Field. The Nelson Baseball Association should work with Parks and Facilities Asset Management staff from Nelson City and Tasman District Councils on information required to include in a case to the Saxton Field Committee. hh	<p>1) Nelson Baseball continues to liaise with Tasman District Councils Reserves Office for the provision of the existing short term baseball diamond at Saxton Field.</p> <p>2) The Nelson Baseball Association works with Parks and Facilities Asset Management staff from Nelson City and Tasman District Councils to prepare a case to the Saxton Field Committee on long term baseball facilities at Saxton Field.</p>

18193	Ms Christine van Hoppe	Club President	Tasman Wheelers	See attached.	NELSON-CITY\paulth	<p>Council is mindful that the Saxton Field Reserve Management Plan 2008 is due for review, and needs to be undertaken before any further significant pavilions are planned. The Avery Field amenities block is in close proximity to the velodrome and provides changing rooms, showers and toilets. Both Nelson and Tasman Councils consider the completion of car parking and the connection to Champion Road to be an immediate priority for the velodrome area. This is supported by Cycling Nelson, who Council regards as the liaison for the velodrome.</p> <p>Funding has been included in the Long Term Plan for the investigation into future pavilion needs in years 2026 and 2027.</p>	<p>Decline request (No action required) for funding for a pavilion facility adjacent to the velodrome. Officers consider the completion of car parking and the connection to Champion Road to be the immediate priority, which has been accepted by the Saxton Field Committee and is supported by Cycling Nelson. The Avery Field amenities block is in very close proximity to the velodrome and provides changing rooms, showers and toilets. Funding has been included in the Long Term Plan for the investigation into future pavilion needs in years 2026 and 2027.</p>
18656	Mr Murray Cameron		Personal	See attached.	NELSON-CITY\paulth	<p>Council is mindful that the Saxton Field Reserve Management Plan 2008 is due for review, and needs to be undertaken before any further significant pavilions are planned. The Avery Field amenities block is in close proximity to the velodrome and provides changing rooms, showers and toilets. Both Nelson and Tasman Councils consider the completion of car parking and the connection to Champion Road to be an immediate priority for the velodrome area. This is supported by Cycling Nelson, who Council regards as the liaison for the velodrome.</p> <p>Funding has been included in the Long Term Plan for the investigation into future pavilion needs in years 2026 and 2027. Health and safety, including access to first aid supplies, is the responsibility of the sporting group using the reserve.</p>	<p>Decline request (No action required) for funding for a pavilion facility adjacent to the velodrome. Officers consider the completion of car parking and the connection to Champion Road to be the immediate priority, which has been accepted by the Saxton Field Committee and is supported by Cycling Nelson. The Avery Field amenities block is in very close proximity to the velodrome and provides changing rooms, showers and toilets. Funding has been included in the Long Term Plan for the investigation into future pavilion needs in years 2026 and 2027. Health and safety, including access to first aid supplies, is the responsibility of the sporting group using the reserve.</p>

18693	Mr Trevor Garnett	Nelson Cricket Umpire	Garnett+	See attached	NELSON-CITY\paulth	Funding is included for the levelling, irrigation, drainage and cricket wickets at the Alliance Green between 2019 and 2022.	Request underway through Saxton Field capital works projects.
18744	Mr Murray Cameron	Chair	Champion Green Facilities Group	See attached.	NELSON-CITY\paulth	Council is mindful that the Saxton Field Reserve Management Plan 2008 is due for review, and needs to be undertaken before any further significant pavilions are planned. The Avery Field amenities block is in close proximity to the velodrome and provides changing rooms, showers and toilets. Both Nelson and Tasman Councils consider the completion of car parking and the connection to Champion Road to be an immediate priority for the velodrome area. This is supported by Cycling Nelson, who Council regards as the liaison for the velodrome. Funding has been included in the Long Term Plan for the investigation into future pavilion needs in years 2026 and 2027. The road and car parking project, proposed for the first three years of the Long Term Plan, will be designed for use as a speed skating track, therefore a separate track is not seen as a priority during the timeframe of the LTP.	Decline request (No action required) for funding for a pavilion facility adjacent to the velodrome. Officers consider the completion of car parking and the connection to Champion Road to be the immediate priority, which has been accepted by the Saxton Field Committee and is supported by Cycling Nelson. The Avery Field amenities block is in very close proximity to the velodrome and provides changing rooms, showers and toilets. Funding has been included in the Long Term Plan for the investigation into future pavilion needs in years 2026 and 2027. The road and car parking project, proposed for the first three years of the Long Term Plan, will be designed for use as a speed skating track, therefore a separate track is not seen as a priority during the timeframe of the LTP.

18878	Mrs Heather Bryant	Chairperson	Nelson Hockey Association (1993) Inc	See attached submission.	NELSON-CITY\pault	To clarify, the figures shown in the proposed LTP for the Hockey Turf Renewal are just for that project. The \$605,000 is a worst-case estimate and includes works to subsoil drains, replacement shock pads and other contingencies. As these components are eliminated through investigations the cost will reduce. Council supports the proposed electronic scoreboard installation and will amend its budgets accordingly to make funding available. Over the coming years Council is proposing to assess all flood lighting and prioritise funding for upgrades and renewals where necessary. Therefore Council will wait until this assessment is undertaken before undertaking any major upgrades, unless there are safety risks present.	Recommend move year 2 funding to year 1 (406943123271), and reduce to \$20,000 total [AWAITING ESTIMATE FROM HEATHER - PH]. Requests for turf replacement underway through existing projects. Decline request (No action required) for lighting upgrade because an assessment of all flood lighting is underway and requires completion before individual projects can be prioritised for funding (unless there is a safety issue).
18991	Mrs Eileen Beattie		1955	To Whom it may concern, I would like to submit an agreement in principal to the proposal by Nelson Roller Speed Skating Club. We have viewed their submission as a committee, and think it to be a very sound proposal and of great benefit to similar sports such as ours. Whilst we do not envisage using the proposed track very often, it would certainly provide another option for us to hold events on, or train on when not being used by others. The original idea for Nelson City Council to use current road areas we think is flawed and a health and safety issue. Much better to have a purpose built , and suitably sign posted area for these kind of activities. Yours sincerely, Eileen Beattie President Waimea Harrier Club	NELSON-CITY\andrp	As per Nelson Speed Roller Skating Club submission	Decline request as not a priority for Saxton Field at this time.

19006	Mrs Julie Baxendine	Board Chair	Nelson Netball Centre	Please find attached our submission document from Nelson Netball Centre	NELSON-CITYjocke	Council can assess the Saxton Netball Pavilion, in particular the long term suitability of the existing change rooms and toilet facilities. This can be done through the Asset Management Plan for Property and Facilities 2018 - 2028. The work can be completed over the next two years.	Request to be carried out within existing budget for Saxton Stadium.
19006	Mrs Julie Baxendine	Board Chair	Nelson Netball Centre	Please find attached our submission document from Nelson Netball Centre	NELSON-CITYpaulth	Funding is included in year 1 of the LTP for all parks hard surfaces to be included in an asset management database. Through this process the netball courts will be assessed and prioritised for renewal.	Request for netball courts to be assessed for renewal to be undertaken through programme of loading Parks hard surfaces to RAMM database (year 1).
19006	Mrs Julie Baxendine	Board Chair	Nelson Netball Centre	Please find attached our submission document from Nelson Netball Centre	NELSON-CITYpaulth	Support for courtside lighting noted.	Request for lighting underway through project 3269.
19007	Mr Andrew Stanton	Committee member	Nelson Roller Sports Club - Speed section	This a resend due to an error message i received earlier - apologies if you already received this. Please find attached a submission from Nelson Roller Sports Club - Speed section relating to the Saxton field multi-use sports circuit. Regards, Andrew Stanton Committee member on behalf of Anna Bartlett Chairperson.	NELSON-CITYlandrp	Not a priority for Saxton Field at this time	Decline request
19021	Mr Eric Verstappen	President	Athletics Nelson	To Whom it may concern, I would like to submit an agreement in principal to the proposal by Nelson Roller Speed Skating Club. This is for a 1km long, multi-use, all weather hard surface sports track at Saxton Field adjacent to the new velodrome. The Athletics Nelson Executive have viewed their submission and consider the proposal would provide a significant additional benefit to a range of recreational users and be a worthy addition to the facilities provided at Saxton Field. Athletics Nelson use the internal road and adjacent cycleway network during its annual half marathon event, and have hosted road race and race walk events within the complex during such events as the SI Masters Games. Having an additional circuit as proposed would enhance safe, off-road, all weather athletic competition and training opportunities for a range of users as well as the public at large, particularly given the shortage of footpaths within the complex.	NELSON-CITYlandrp	As per the Nelson Roller Speed Skating Club	Declined as not being a priority at this time

19060	Mr Ian Paterson	NBF District Executive, Grounds and Facilities	Nelson Bays Football Inc	Please see attached.	NELSON-CITY\andrp	Council staff are working with users of Trafalgar Park to develop a seasonal booking agreement that fairly addresses the need to provide for a range of high quality enclosed regional sports and open air events. It is proposed that an investigation be undertaken in 2018/19 to better understand the need and priority for improved training lights. Staff do not believe that the construction of an artificial turf for football, rugby and rugby league is a priority at this time. Funding is included in the sports ground accounts to provide adequate playing surfaces for football.	That the request for an artificial playing surface for football, rugby and rugby league be declined at this time.
19105	Ms Jane Murray		NMDHB Public Health Service	See attached.	NELSON-CITY\paulth	Council supports adopting the Youth Relevant Design approach into projects, including the Stoke Youth Park.	Recommendation to adopt the Youth Relevant Design approach for the Stoke Youth Park is noted and supported.
19105	Ms Jane Murray		NMDHB Public Health Service	See attached.	NELSON-CITY\paulth	Council supports the inclusion of shading into playground design. The Parks and Reserves Asset Management Plan 2018-28 includes a level of service that 100% of new and renewed playgrounds must consider shading in their design. There is no level of service relating to drinking water, however its importance noted and fountains will be incorporated into designs where practical.	Support for playgrounds noted, and request for shading and drinking fountains to be included in playground design noted and supported. The Parks and Reserves Asset Management Plan 2018-28 includes a level of service that 100% of new and renewed playgrounds must consider shading in their design.
19108	Mr Derek Shaw			See attached.	NELSON-CITY\andrp	Further investigation is being undertaken and will be presented to the Saxton Field Committee on 4 May 2018.	
19129	Mr Gaire Thompson		Thompson Property Group	See attached.	NELSON-CITY\paulth	Council has invested in sand carpet turfs at its premier playing fields (Trafalgar Park and Saxton Oval) so as to provide a high quality surface suitable for hosting top level (including international) fixtures. These turfs have an expected life, after which the organic matter build up must be stripped off and the surface replenished with new graded sand and grass re-sown.	Comments on sand carpet turf renewals at Trafalgar Park and Saxton Oval noted.