

Decision released from confidential session			
Recommendation from (agenda report)	Date of meeting	Recommendation to (decision-making meeting)	Date of meeting
n/a	n/a	Sports and Recreation Committee	17 September 2020
Report Title and number			
R18081 - Recreational use of Land Owned by Koata Limited			
Documents released			
Decision and attachment 1 A2410631			
Decision			
Resolved SPO/2020/045			
<i>That the Sports and Recreation Committee</i>			
<ol style="list-style-type: none"> 1. <i><u>Receives</u> the report Recreational Use of land owned by Koata Limited (R18081) and its attachments (A2410631, A2407219 and A2407218); and</i> 2. <i><u>Directs</u> officers to report back to the Sports and Recreation Committee with recommendations on short term and long term options; and</i> 3. <i><u>Agrees</u> that the decision only and Attachment 1 (A2410631) be made publicly available; and</i> 4. <i><u>Agrees</u> that Report (R18081) and Attachments 2 (A2407218) and 3 (A2407219) remain confidential at this time.</i> 			

Outline for Recreation Management Plan funding for Ngati Koata Submission to the 2019-20 Annual Plan

Request:

Ngati Koata (NK) request \$30,000 to develop a Recreation Management Plan which will allow for sustainable management of activities requiring public access rights to the Hira forest. It is intended to reference similar plans as have been developed for the Rotorua forest areas.

Background:

The Hira Forest was previously part of Crown land and is incorporated into the settlement assets for Ngati Koata. Ngati Koata and the Crown signed a Deed of Settlement on 21 December 2012. Public expectation is that access to pre-existing activities would continue.

Length of track – the attached maps indicate the scale of the existing and intended tracks.

Current public use – The Hira Forest has an extensive range of Mountain Bike tracks which have been developed using volunteer labour from Nelson Mountain Bike Club and NCC cash grants/resources. A significant portion of these tracks were constructed when the land was owned by the Crown, managed by Hancock Forest Management, and the public has an expectation of continued access (it is probable that many people are actually unaware that the land is now privately owned). Other public users of the area are walkers, hunters, and motor cross riders.

Forestry management – the Hira Forest is a working forest and is currently under a Crown Forest Lease to Tasman Pine Limited (TPL). It is governed by the Health and Safety Act – keeping their workers and members of the public safe during forestry operations.

Issues:

- Forestry operation – this is a working forest with unpredictable requirements for safe access, including large vehicles. TPL also maintain the road and are interested about the impact of new biking tracks on the road. Currently TPL are assisting with access management, however it is not part of the forest operation to manage complex public access on a 24/7 basis.
- Health and Safety implications – all employees of any commercial activity and the public must always be kept safe from interactions with each other. This means that commercial operators need to be aware of the possibility and location of other users in the area.
- NCC support and promote Nelson as a destination for mountain biking and other recreational activities. This leads to increasing demand and activity on privately owned land. It is also noted that users have no understanding as to when they leave NCC reserve land and move onto Ngati Koata land.

- Commercial asset – Settlement Assets have been provided as recompense for Ngati Koata to earn a return enabling them to provide programmes and assistance to iwi. Koata Limited operates some minor commercial activities such as beekeeping and allows some telecommunication access for Spark and others at the summit of Fringe Hill. The predominant commercial activity is the lease of the land to TPL.
- Council's Long Term Plan includes community outcomes that value the region's open space and promote enabling access to it for to recreation. NCC's Parks and Reserves Asset Management Plan seeks to encourage active recreation and takes a wider view of the region's backcountry recreation network and (e.g.) identifies trails in its GIS regardless of underlying land ownership, and provides funding for recreational activities on private land. Ngati Koata aspires to be supportive of recreation activities continuing on its land, however does not have the resources to provide a comprehensive programme of access management and is not in the business of providing recreational activities currently.
- NK are concerned that TPL can have reasonable and safe access to the land they lease for a forest operation.

Process

While the Hira Forest land is not vested as Reserve, it is proposed to use the process outlined in the Reserves Act (1977) to guide the development of the plan to ensure wide public consultation is undertaken to inform the plan.

Ngati Koata will manage the process by engaging a suitably qualified consultant to undertake the development of the plan, in consultation with NCC staff.

Key Stakeholders:

Ngati Koata Trust and Koata Limited

Nelson City Council

Tasman Pine Forests Ltd (TPL)

Nelson Mountain Bike Club (NMBC)

Nelson Motor Cycle Club

Department of Conservation

Nelson Tramping Club

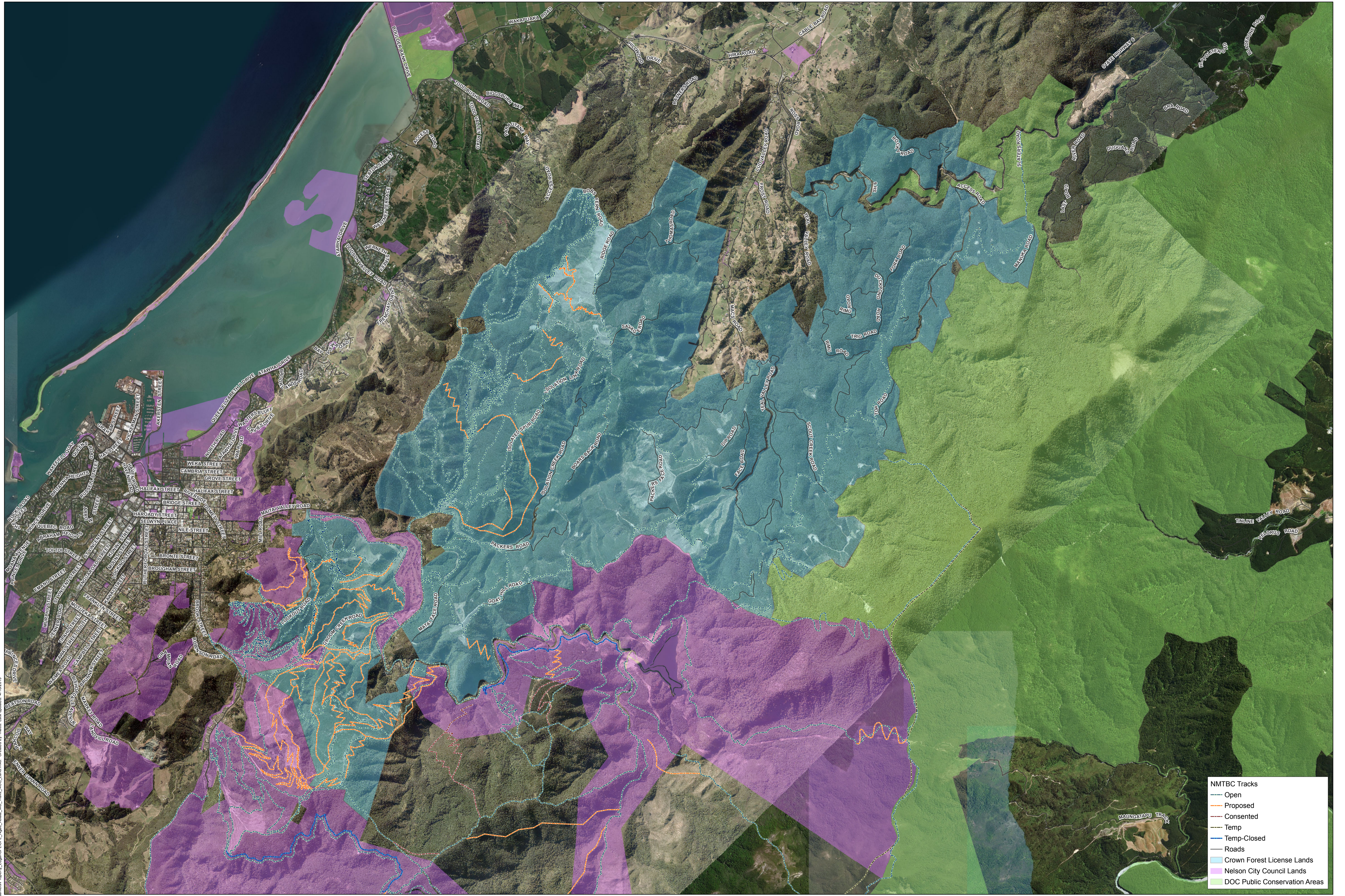
Commercial operators – beekeepers, telecommunication operators, commercial mountain bike guides/shuttles

Action Forest Management (AFM) – provide assistance with safe access

Hunting

Walking Access Commission

Fire and Emergency NZ



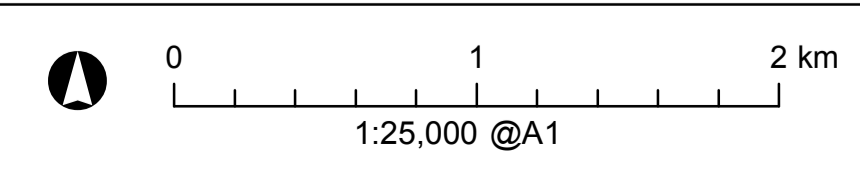
- NMTBC Tracks
- Open
- Proposed
- Consented
- Temp
- Temp-Closed
- Roads
- Crown Forest License Lands
- Nelson City Council Lands
- DOC Public Conservation Areas

Shred at: C:\GIS\work\mtd\mtd\Property_Legal\CFL_Ngati_Koata_MB_Trails_NCC_Land.mxd Created by: mtd Last updated: 4/18/2019



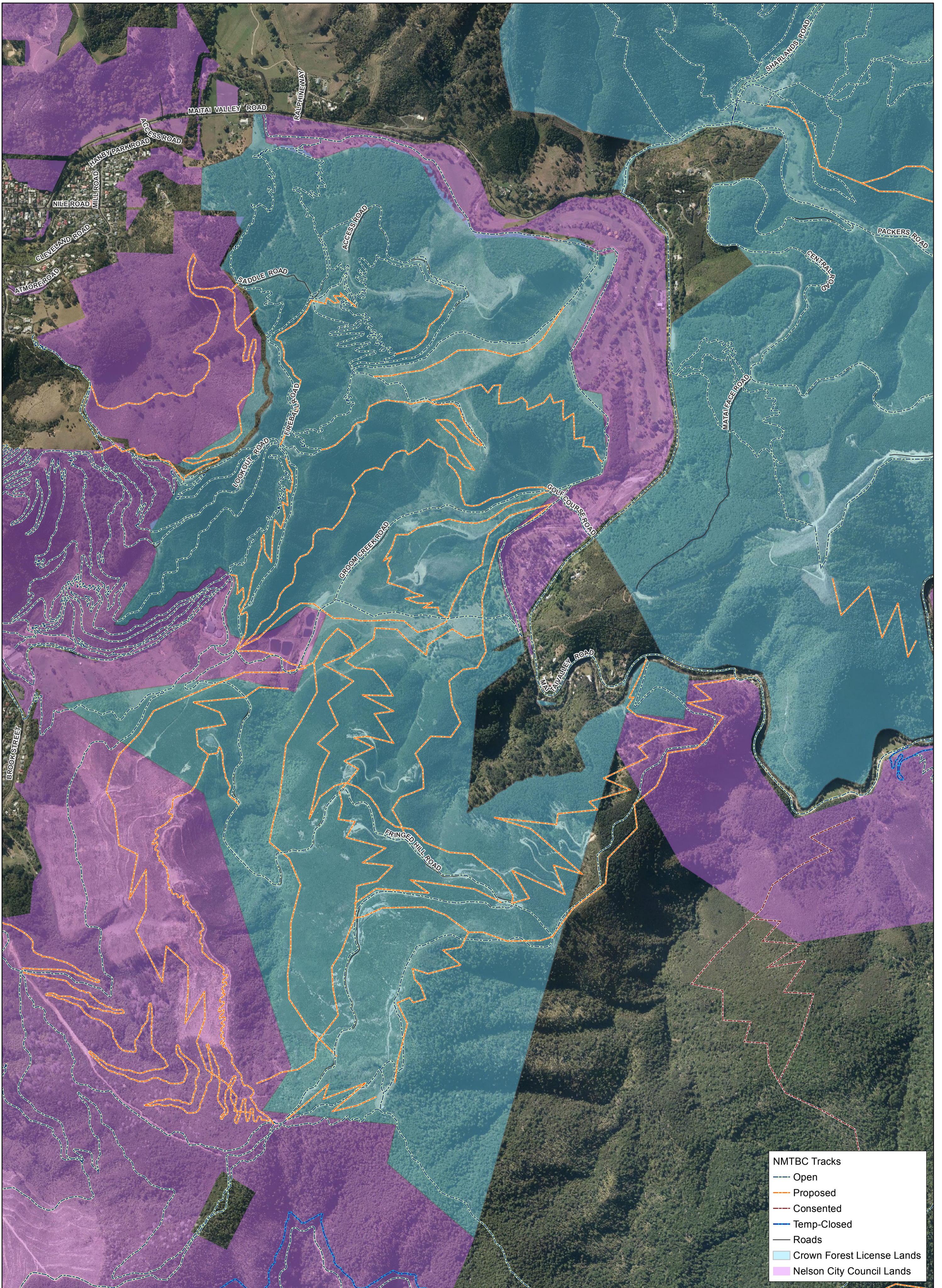
This document has been produced for **INTERNAL** release.
 Information displayed is the best available at printing, and is subject to change as new data becomes available.
 COPYRIGHT © 2019 TASMAN PINE FORESTS LIMITED. ALL RIGHTS RESERVED. This document is protected by copyright vested in
 Tasman Pine Forests Limited (TPFL). It may not be reproduced or transmitted in any form, or by any means including, but not limited
 to, electronic, photocopying, recording, or otherwise, without the prior written permission of TPFL. No information embodied in the
 document which is not already in the public domain shall be communicated in any way to any third party without the prior written consent
 of TPFL. Any breach of the above obligations may be restrained by legal proceedings seeking remedies including injunctions, damages
 and costs.

Date: 18 April 2019



A2410631

Ngati Koata - Hira
Nelson City Council & DOC
Proposed Mountain Bike Trails



NMTBC Tracks

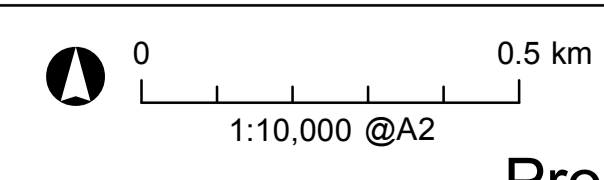
- Open
- - - Proposed
- - - Consented
- Temp-Closed
- Roads
- Crown Forest License Lands
- Nelson City Council Lands

Saved at: D:\GIS_work\kdm\kdm\Property_Legal\CFL\CFCL_Ngati_Koata_MB_Trails_NCC_Land_A2.mxd Created by: mattid Last updated: 4/18/2019



This document has been produced for **INTERNAL** release.
 Information displayed is the best available at printing, and is subject to change as new data becomes available.

COPYRIGHT © 2019 TASMAN PINE FOREST LIMITED. ALL RIGHTS RESERVED. This document is protected by copyright vested in Tasman Pine Forests Limited (TPFL). It may not be reproduced or transmitted in any form, or by any means including, but not limited to: electronic, photocopying, recording, or otherwise, without the prior written permission of TPFL. No information embodied in the document which is not already in the public domain shall be communicated in any way to any third party without the prior written consent of TPFL. Any breach of the above obligations may be restrained by legal proceedings seeking remedies including injunctions, damages and costs.



Date: 18 April 2019

Ngati Koata - Hira 03
Nelson City Council
Proposed Mountain Bike Trails