

# Save money and reduce waste with these alternatives to landfill



## WASTE CHARGES ARE GOING UP

The cost of user-pays rubbish collections and disposal costs at the Waste Recovery Centre (see map) will increase over the next few years because of the increases to the waste disposal levy set by central Government.

Visit [nelson.govt.nz](http://nelson.govt.nz) and search 'Waste Recovery Centre' to see opening hours and a full list of solid waste charges.

If you have any questions about waste, please email [rethinkwaste@ncc.govt.nz](mailto:rethinkwaste@ncc.govt.nz)



## REDUCE AND REUSE BEFORE YOU RECYCLE AND DISPOSE!

This brochure includes many ways you can recycle items you no longer need and save on landfill fees. However, it's even better if you can reduce the amount of waste you create in the first place and reuse the resources you already have.



## RETHINK

REDUCE

REUSE

RECYCLE

DISPOSE



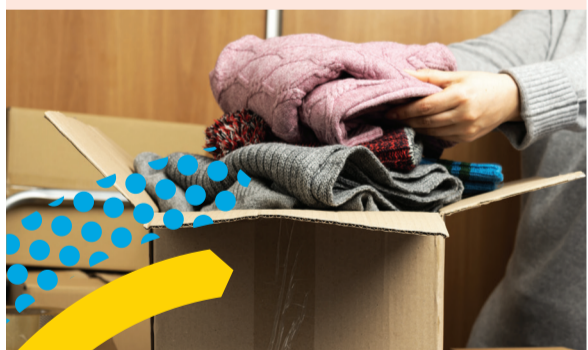
### Electronic devices

**Recycle:** Take used electronic items (anything with a power cord or battery except for large whiteware) to Nelson Environment Centre, 6 Vivian Place, Tāhunanui where it will be repaired for reuse or recycled. Council subsidises the cost of recycling, although some charges may apply.

A free recycling service is also available through the national TechCollectNZ scheme with a drop off at Noel Leeming in Nelson only. This programme accepts a range of items including personal computers, printers, cameras and peripherals. Check what is accepted at [techcollect.nz](http://techcollect.nz)

There is also a network of RE:MOBILE free cellphone drop off points across the region, including mobile phone retailers and some libraries. Search 'e-waste recycling' at [nelson.govt.nz](http://nelson.govt.nz) for more information.

**Dispose:** Electronics containing batteries must be kept out of landfill to avoid risk of fire. Items with batteries removed can be taken to the Nelson Waste Recovery Centre (see map). Waste disposal charges apply. If you are placing an electronic item in a rubbish bin please ensure that batteries are removed and taken to one of the free battery drop off points across the region.



### Clothes and household items

**Recycle:** Clean, good quality items can be taken to your local op shop or reuse store. Ask the shop whether they want your items, **please do not dump items outside the shop**. Search 'op shop' at [nelson.govt.nz](http://nelson.govt.nz) to download our op shop map.

Take part in Second Hand Sunday to rehome your items for free. Search 'Second Hand Sunday' at [nelson.govt.nz](http://nelson.govt.nz) to register for the next event.

Clean 100% cotton clothing can be recycled using a Little Yellow Bird textile take back bag. Visit [littleyellowbird.com](http://littleyellowbird.com) for more info.

**Dispose:** Threadbare, stained, worn-out or tatty items should be taken to the Nelson Waste Recovery Centre (see map) or put in your kerbside rubbish bag or wheelie bin for disposal.



### Batteries

**Recycle:** Batteries up to the size of a power pack for a hand tool (excluding lead acid batteries) can be dropped off free for recycling at Council's customer service centre (small quantities), the Nelson Waste Recovery Centre (see map) and Nelson Environment Centre (who also accepts lead acid batteries). Free battery drop off is also available at Bunnings. Search 'battery recycling' at [nelson.govt.nz](http://nelson.govt.nz)

**Dispose:** DO NOT put batteries in your rubbish bin/bag or in your recycling bin! They can cause fires when compressed, posing a risk to staff working at our recycling centre and landfill.



### Chemicals, paints, chemical containers

#### AGRICHEMICALS & CONTAINERS

Hazardous waste can cause a lot of damage in landfill. Agrecovery provides safe disposal of unwanted agrichemicals and recycling of empty containers and drums. Visit [agrecovery.co.nz](http://agrecovery.co.nz) to find out more.

#### HOUSE/GARDEN CHEMICALS

**Dispose safely:** Do not put hazardous waste like garden sprays, household cleaners and other chemicals in your general waste bag or bin or down the drain! Residential quantities can be disposed of safely at the Nelson Waste Recovery Centre (see map), and small charges will apply. Search 'hazardous waste' at [nelson.govt.nz](http://nelson.govt.nz) for more information.

#### UNUSED PAINT

**Recycle:** Paint contains chemicals that can cause environmental damage if put into landfill. Please never rinse your brushes or cans into a stormwater drain as the residue goes out to the sea. Instead rinse everything in a sink connected to the wastewater system. Resene also runs a paint recycling programme (Paintwise) – more information can be found at [resene.co.nz/paintwise](http://resene.co.nz/paintwise)

**Dispose:** Residential quantities can be disposed of at Nelson Waste Recovery Centre (see map) as hazardous waste – small charges apply.

### Kerbside recycling

**Recycle:** The following items can be recycled for free in kerbside recycling or at Nelson Waste Recovery Centre (see map):

- Clean cardboard, paper and magazines.
- Clean tins and cans.
- Clean, unbroken glass bottles and jars. These **must be put in your blue recycling crate** for kerbside collection – not in your yellow recycling wheelie bin.
- Clean plastic containers **numbered 1, 2 or 5**.

All lids go in your rubbish bin. Aluminium lids are collected for charity – search 'lids' at [nelson.govt.nz](http://nelson.govt.nz) for more information.

For more information about kerbside recycling search 'recycling' at [nelson.govt.nz](http://nelson.govt.nz)



### Other plastics

**Recycle:** Clean, dry, empty soft plastics (anything plastic that can be crunched into a ball like bread bags, bubble wrap, chip bags) can be recycled through the soft plastics recycling scheme using a NZ Post Soft Plastic Recycle courier bag, available from The Warehouse, Warehouse Stationery or online via the NZ Post website: [nzpost.co.nz](http://nzpost.co.nz).

**Dispose:** Dispose of other plastics in your rubbish bin or bag.

#### POLYSTYRENE

**Recycle:** Clean polystyrene packaging can be dropped off at Mitre 10 Mega in Stoke for recycling via EXPOL, who re-manufacture it back into polystyrene items.

**Dispose:** Dirty or contaminated polystyrene (e.g. from food packaging) needs to be put in your rubbish bin or bag. Avoid breaking it up as this will release small particles of plastic.

#### BALE WRAP, SILAGE SHEETS

**Recycle:** Get your bale wrap, silage sheets, grain bags, twine and polypropylene bags collected from your property with Plasback. Find out more at [plasback.co.nz](http://plasback.co.nz)

**Dispose:** Burning plastic releases toxic smoke, so avoid this at all costs. If you're not able to recycle these plastics with Plasback, take them to Nelson Waste Recovery Centre for disposal.

### Fridges

Please ensure your fridge is taken to the Nelson Waste Recovery Centre (see map) so that the refrigerant gases (potent greenhouse gases) are removed, or check that the organisation taking your fridge will have it disposed of in this way. Charges apply.

### Food scraps

**Recycle:** Turn food waste into compost at home. Save \$20 with our subsidy when you buy a compost bin, worm farm or bokashi bin from participating retailers. Search 'compost' at [nelson.govt.nz](http://nelson.govt.nz) for more info.

If you don't have a solution for food waste at home, check out [sharewaste.org.nz](http://sharewaste.org.nz) to see if there's someone nearby who can take your food scraps, or contact Community Compost to find out about their compost collection service: [communitycompost.co.nz](http://communitycompost.co.nz)

To learn how to reduce or avoid food waste go to [lovefoodhatewaste.co.nz](http://lovefoodhatewaste.co.nz)

### Garden waste

**Recycle:** Compost garden waste like lawn clippings and plant cuttings. Add compost to your garden or paddocks as a valuable source of nutrients. Visit [nelson.govt.nz](http://nelson.govt.nz) and search 'compost' for tips on composting.

Purchase a garden waste wheelie bin service available from some of the service providers listed overleaf for your garden waste to be taken away for composting.

Or take garden waste to the green waste drop off at the Nelson Waste Recovery Centre for composting (charges apply).

If you're closer to Richmond, take your garden waste to Green Waste to Zero in Cargill Place.



### Scrap metal

**Recycle:** Visit your local scrap metal recycler and you may get paid for your scrap metal.

**Dispose:** Most scrap metal can be dropped off for free at our Nelson Waste Recovery Centre (see map). There are also local scrap metal options listed under 'other reuse and recycling facilities'. There may be a charge for some items.

### Children's car seats

**Recycle:** Take your expired children's car seat to Baby on the Move, Akersten Street, Nelson for recycling. Council subsidises this service from \$25 down to \$10 for Nelson residents.

**Dispose:** If recycling isn't feasible for you, your expired car seat can be taken to the Nelson Waste Recovery Centre for disposal to landfill (charges apply).

## NELSON WASTE RECOVERY CENTRE AND FREE BATTERY DROP OFF

- 1 **Vivian Place**, off Pascoe Street, Tāhunanui, 03 546 0200 – includes free recycling drop off point

## OTHER REUSE AND RECYCLING FACILITIES

- 2 **Nelson Environment Centre Reuse Shop and free battery drop off:** 6 Vivian Place, Tāhunanui, 03 545 9176
  - 3 **Nelson Metal Industries:** 101 Pascoe Street, Stoke, 03 547 9706
  - 4 **Sims Metals Nelson:** 2 Merton Place, Stoke, 03 548 6766
- Baby on the Move:** (child car seat recycling), 4 Akersten Street, Port Nelson, 03 547 2555

Organisations wishing to be added to this list should email [rethinkwaste@ncc.govt.nz](mailto:rethinkwaste@ncc.govt.nz)



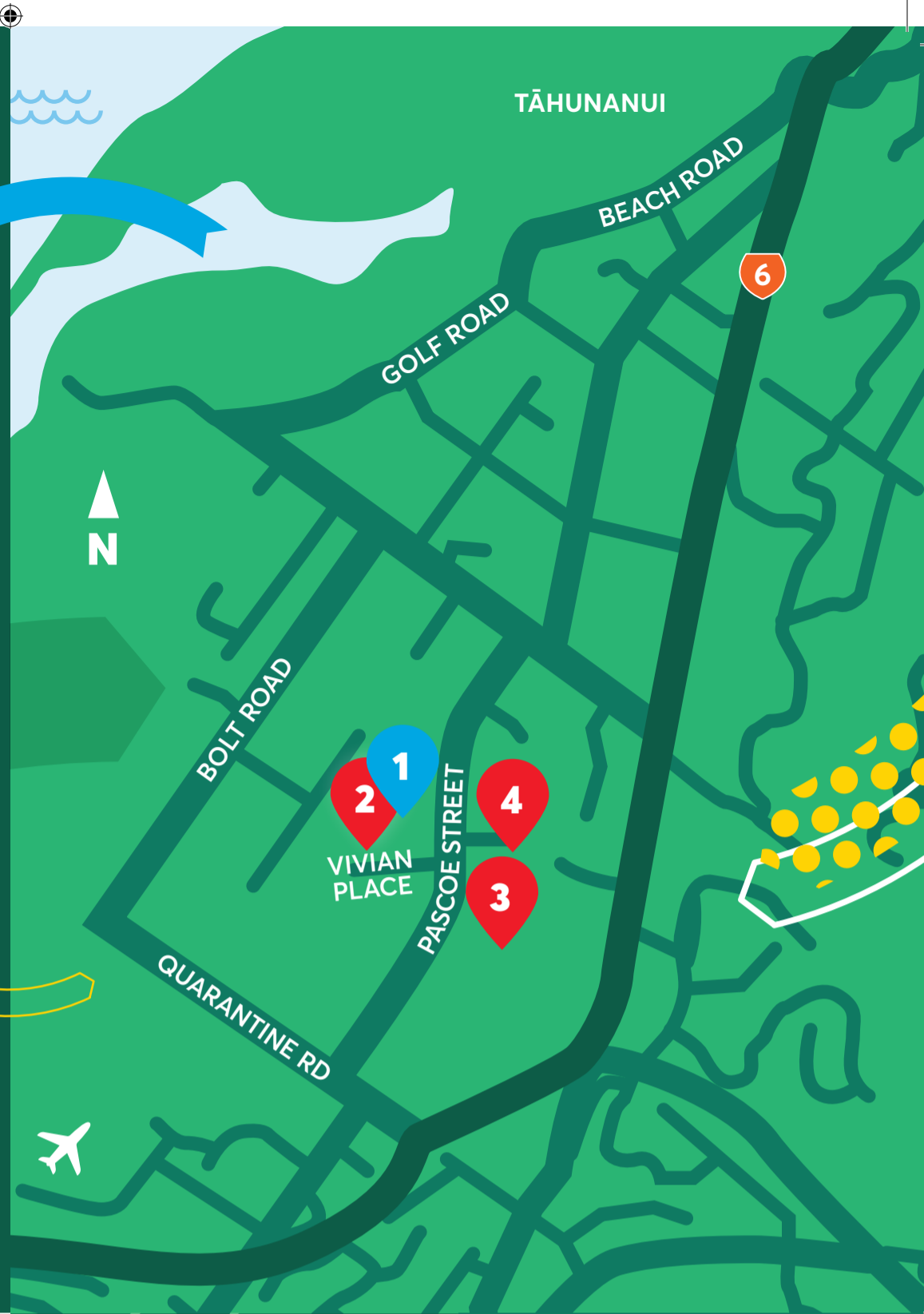
## LOCAL WASTE SERVICE PROVIDERS

There are a wide range of companies that offer rubbish, greenwaste and recycling collections in our region. See map to the right for operators in your area.

Choosing prepaid rubbish bags or a 'pay as you go' bin service can save costs and reduce the need to fill the bin each week. Ask your provider if they offer a 'pay as you go' option, or other ways to reduce waste and save money.

The following companies provide a range of household and commercial waste and recycling services. Visit their website or call them to find out more:

- **Betta Bins:** 0800 123 221
- **Can Plan:** 03 547 0642
- **Envirowaste:** 0800 240 120
- **Smart Environmental:** 0800 424 990
- **Waste Management:** 0800 10 10 10



## Dropping off donations to op shops?

# BE A GREAT GIVER

Unsellable items cost charities thousands to dispose of each year.

- G** Give items you would buy for yourself or a friend.
- R** Repurpose or dispose of ripped, broken or soiled items, they cannot be donated.
- E** Ensure donated clothing is clean and in good condition.
- A** Always donate during opening hours.
- T** Try another time if the shop is closed, don't leave donations outside.



## Looking for op shops?

### Tips for good giving

If you have a wardrobe clear out? Please consider donating pre-loved items to your favourite charity. Ask yourself, 'would I wear it in a charity shop?' If the answer is 'probably shouldn't be donated', for giving are to make sure:

Items are clean, smell nice, have no holes, are not faded, and are all items during the season.

More than a few items at the shop to drop off.

Items should be in good condition. Please call 03 548 5760 for more information.

Things you can do to help:

Think-waste/

ation,

or.

MAP & GUIDE

RETHINK WASTE Whakaarohia

Nelson City Council Te Kaitiaki o Whakatū



Pick up an op shop map from our customer service centre or search 'op shop' at [nelson.govt.nz](http://nelson.govt.nz) to download a copy.

### If in doubt, leave it out!

If you're not sure how to safely or correctly dispose of something, seek guidance on [nelson.govt.nz](http://nelson.govt.nz) (search 'rethink waste') or call us on 03 546 0200.



Nelson City Council is not responsible for the currency or accuracy of content when providing information about other organisations in this leaflet, and inclusion does not imply endorsement by Nelson City Council.

This brochure is printed on recycled paper

RETHINK WASTE Whakaarohia

Nelson City Council Te Kaitiaki o Whakatū